

June 2023

# THE MELLING CHRONICLE



Parish Council

Cooking Corner...Salad

Melling St Wilfrid CE Primary School

# The Melling Chronicle

## In This Month's Issue

<b>News From Melling And Wrayton.....</b>	<b>4</b>
Melling Village Hall Events.....	4
St Wilfrid's Church.....	5
Parish Council.....	6
Cooking Corner...Salad.....	10
Melling St Wilfrid CE Primary School.....	12
<b>News From The Neighbours.....</b>	<b>15</b>
Hornby Pensioners.....	15
Lunsdale Probus Club.....	17
Hornby District Ramblers.....	19

## Contacts

<b>Parish Council Chairman</b>	<b>Sandra Towers Tel: 21399 Email: sandramtowers@yahoo.co.uk</b>
<b>Parish Clerk</b>	<b>Claire Helme Tel: 07845 186958</b>
<b>Parish Council Website</b>	<b>Anthea Carter Tel: 0770 8882989 Email: mellingwithwraytonwebsite@gmail.com</b>
<b>Melling Village Hall</b>	<b>Margaret Toase Tel: 21002</b>
<b>Melling St Wilfrid's School</b>	<b>Tel: 21538</b>
<b>Church Warden</b>	<b>JAC Beeson Tel: 21638</b>
<b>Melling Chronicle Editor</b>	<b>Anthea Carter Tel: 0770 8882989 Email: mellingchronicle@yahoo.co.uk</b>

### EDITORIAL TEAM

Editor: Anthea Carter, assisted by Sandra Towers

Delivery Team: Judith Jones, Mike Murray, Robbie Murray, Sophie Ridsdale (Wennington), Eleanor Procter, Lester Griffiths, Cath Taylor

Advertising and Invoices: Claire Helme (Parish Clerk)

Front Cover: Many thanks to Edwin Howson / Back Cover: Many thanks to Howard Lewer

2 Jun	Pub Night - Melling Village Hall	7.30pm
5 June	Lunesdale Probus Club Talk - Hornby Institute	Page 17
10 June	Dominoes Evening - Hornby Institute	7pm
10 June	Hornby District Ramblers - Walk	Page 19
11 June	Messy Church - St Wilfrid's Church	4pm
13 June	Hornby Pensioners Trip - Hornby Institute	9am
14 June	Hornby Drama Group - Hornby Institute	7.30pm
16 June	Hornby Drama Group - Hornby Institute	7.30pm
18 June	Holy Communion - St Wilfrid's Church	11.15am
19 June	Lunesdale Probus Club Talk - Hornby Institute	Page 17
23 June	Movie Night - Melling Village Hall	7pm
24 June	Hornby District Ramblers - Walk	Page 19
27 June	Dominoes Evening - Hornby Institute	7pm

## MELLING CHRONICLE

The Chronicle is available in PDF format at [www.mellingwithwrayton.net](http://www.mellingwithwrayton.net)

Please send items for the Melling Chronicle to the editor:  
[mellingchronicle@yahoo.co.uk](mailto:mellingchronicle@yahoo.co.uk)

Please supply text as a Word document or by email. Photographs are always welcome at a high resolution. If you have an interesting, relevant, high resolution image for the front or back cover, please send it in for consideration.

The Melling Chronicle is a forum open to everyone in the village. The views expressed in articles and letters are not necessarily the views of the Editor or the Parish Council, and they cannot accept responsibility for goods or services advertised in the magazine, although advertisements are accepted in good faith. The Editor reserves the right to edit or exclude items submitted for publication, and no liabilities are implied or accepted.

**Deadline for any contribution is the 20th of the preceding month.**

The Melling Chronicle is published monthly except for January and August.

## ADVERTISING

Please contact: The Parish Clerk [mellingwithwraytonpc@gmail.com](mailto:mellingwithwraytonpc@gmail.com)

Charges for 10 editions/Full Page £80.00/Half page £50.00/Quarter page £30.00

Single entry: By negotiation

Please note that anyone submitting an article, notice, letter or advertisement for inclusion in the Melling Chronicle is responsible for the content (including factual accuracy) this rests solely with the originating individual or organisation.



## MELLING VILLAGE HALL EVENTS



The Village Hall needs some **NEW COMMITTEE MEMBERS.**

Why not contact:

Mary 07970705496 or Sandra 07713883632 for more info.



**MELLING VILLAGE HALL PUB NIGHT**  
Friday 2nd June, bar opens 7.30pm

Come along, meet up with friends, have a great start to the weekend.



### PLEASE NOTE THE CHANGE OF DATE

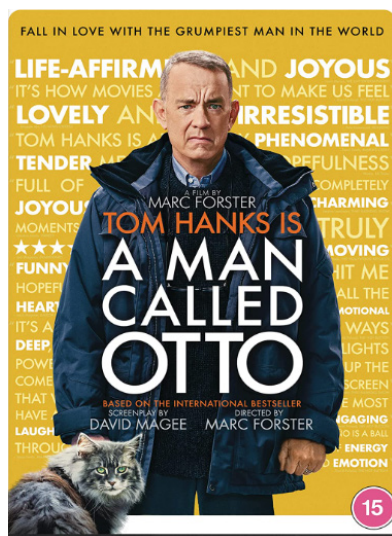
**GREEK NIGHT Saturday 1st July**, doors open 7.00pm for 7.30pm

3 courses—vegetarian & special diets catered for, but they must be notified to Mary in advance. Tickets £15 must be purchased in advance from Mary 07970705496, Sandra 07713883632, Margaret 21002



### MOVIE NIGHT

Making use of our audio-visual equipment we proudly present our next **MOVIE NIGHT:**



**A Man Called Otto on Friday June 23rd**, doors open at 7.00pm and the film starts at 7.30pm. Book with Mary 07970705496.

When a lively young family moves in next door, grumpy widower Otto Anderson meets his match in a quick-witted, pregnant woman named Marisol, leading to an unlikely friendship that turns his world upside down.

It was great to see a full hall of cinema goers, including many first timers on Friday 19th May to watch the delightful, feel-good film Mrs Harris goes to Paris.

We serve hot drinks with cakes and ice cream tubs, why not come along to one of the films listed. If you book in advance you get 50p discount, so £4.50 instead of £5.00, and we know how many to cater for. You don't have to pay for petrol and parking!

## LOOKING AHEAD.....IN MELLING VILLAGE HALL

	<b>Pub Night</b>	Fri 2nd June
	<b>Movie Night: A man called Otto.</b> Tom Hanks stars in the film adaptation of the novel - A man called Ove.	Fri 23rd June
	<b>Greek Night</b>	Sat 1st July
	<b>Movie Night: Fisherman's Friends</b> A singing group of Cornish fishermen are spotted by a top music executive.	Fri 21st July
	<b>Movie Night: The unlikely pilgrimage of Harold Fry</b> An unremarkable elderly man (Jim Broadbent) embarks on a walk ... of 450 miles.	Fri 25th August
	<b>Movie Night: Operation Mincemeat</b> Colin Firth and Matthew Macfadyen face an impossible challenge in 1943.	Fri 22nd September
	<b>Movie Night: Bullet Train</b> Unlucky assassin Ladybug (Brad Pitt) faces adversaries from around the globe.	Fri 20th October
	<b>Movie Night: Elvis</b> Baz Luhrmann directs Austin Butler as Elvis and Tom Hanks as Colonel Tom Parker.	Fri 24th November

## ST. WILFRID'S CHURCH, MELLING



You can now donate to the upkeep of our beautiful ancient church by contributing to our new online fundraiser. Scan the QR code to get started!

Your kind donations keep the building running and the church an active place of worship.

We deeply appreciate all the funds we receive.

Thank you!



DONATE NOW WITH  
**JustGiving**



## ELECTION OF PARISH COUNCILLORS FOR MELLING-WITH-WRAYTON PARISH COUNCIL

On Wednesday 10th May the Parish Council held the Annual Parish Meeting and the Parish Council AGM.

My term as chair of the Parish Council started last May with the celebrations for Queen Elizabeth's Platinum Jubilee. I was honoured to attend the Platinum Jubilee Service at Blackburn Cathedral, and that was followed by the Village's Jubilee Day, 2 great events organised by the Village Hall team, sports and BBQ followed by afternoon tea for 100+ people. The Parish Council gave a grant of £250 towards this, with the Village Hall covering the rest of the cost.

The Parish Council used its footpath grant to replace stiles in disrepair on footpath No8, from Wrayton to Melling Moor, with kissing gates. The annual grant was reapplied for with the addition of a biodiversity grant, which the council pledged to use for bat and bird boxes.

The Wrayton bus shelter rebuild was completed and the insurance excess successfully reclaimed.

The never-ending problem of Wrayton drains continued, our county councillor helped with communication with Highways, but a lack of funding has prevented further progress.

The Parish Council continues to manage the Green, quotations are being gathered for work on the steps. A tree survey was commissioned and undertaken in the early autumn, no trees needed to be felled and only a few have been labelled as amber and must be regularly monitored.

Our city councillor has helped us complain to Highways about the recently erected barriers, specifically about the danger to pedestrians between Melling and the station yard, especially under the railway bridge. Unfortunately, our concerns continue to be dismissed.

The work to erect average speed cameras on the A683 continues, there is a deadline date of the end of the year to have them all functioning.

The Parish Council has supported the Village Hall with a grant towards the redevelopment of the kitchen. bar and storage areas.

*Sandra Towers, May 2023*

## Lowfold Landscapes

Garden Maintenance & Design  
Planting Schemes, Turfing  
Decking, Paving, Patios  
Topsoil & Stone  
Grass Cutting  
Tree Surgery

Call Philip Howson

07816 813 848

Lune View Garage Ltd.



Vehicle Servicing,  
Diagnostics,  
MOT Testing  
Exhausts, Clutches,  
Timing Belts, Welding  
Tyres,  
Wheel Balancing &  
Tracking  
Air Conditioning Servicing  
and Re-Charge  
*Full Valeting Service Available*

Melling, Carnforth, LA6 2RB  
Tel. 015242 21457  
email: [dsglover89@btconnect.com](mailto:dsglover89@btconnect.com)



**HONDA**

**Graham Fawcett Plant Limited**

Unit 3, Bentham Industrial Estate,  
Bentham, Lancaster, LA2 7NB 015242 62888



### **GARDEN MACHINERY SERVICING & SALES**

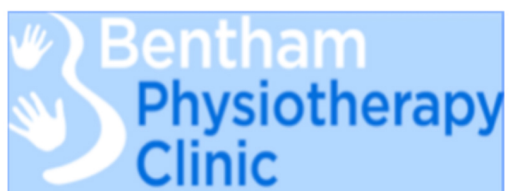
We can offer **\*FREE\*** collection and delivery of garden machinery/ servicing for Melling residents.

Tractor Mowers • Self Propelled & Push Mowers  
Chainsaws • Chains, Bars and Accessories • Chain/ Blade Sharpening  
Hedge Trimmers • Strimmers • Oil • Blowers



**STIHL CHAINSAWS IN STOCK.**  
PETROL ENGINES.

RANGE OF MOWERS IN STOCK – **HONDA/ BRIGGS & STRATTON**  
**PART EX WELCOME.** MOWERS TO SUIT ALL BUDGETS



*For Professional, Effective,  
Chartered Physiotherapy,  
including sports injuries,  
backs, necks and  
acupuncture.*

AXA, AVIVA,  
BUPA authorised clinic.

**Phone 015242 62216**

Website: [www.benthamphysio.com](http://www.benthamphysio.com)

Email: [info@benthamphysio.com](mailto:info@benthamphysio.com)

**ANDREW WHITAKER**

*Gardener  
Painter/Decorator*

*Tel. (01524) 69806  
Mob. 07900 905 026*

[awhitaker112@googlemail.com](mailto:awhitaker112@googlemail.com)

## **Irene Taylor Hearing Centres**

Specialists in Hearing Aids  
and  
Hearing Protection  
Ear wax removal via  
micro-suction

Salt Pie Lane,  
Kirkby Lonsdale  
LA6 2BH

**015242 73589**

[www.prestonhearingcentre.co.uk](http://www.prestonhearingcentre.co.uk)

**Est. 1980**

## **LUNE VALLEY ACCOUNTING**

**35 years' experience.**

Based in the Lune Valley  
Bookkeeping and Accounts  
production for Sole Traders,  
Partnerships & Limited  
companies.

Personal and corporate tax  
returns Wages/PAYE/CIS

Company formation,  
and VAT registration

Contact:

**Peter Scott on 07341388109  
or [peter@lvaccounting.co.uk](mailto:peter@lvaccounting.co.uk)**





**1 Station Road  
HORNBY**

**T: 015242 22288**

**Care & Commitment for your Peace of Mind**

**E: [info@hornbydaynursery.co.uk](mailto:info@hornbydaynursery.co.uk)**

**Ofsted rated us Outstanding in all areas**

- Qualified staff who positively enjoy working with children
- Flexible opening hours to cater for most needs
- 30 hours free childcare for Pre-School children
- Dedicated Baby & Toddler facilities
- Home cooked meals with special diets catered for
- Secure outdoor play areas in rural environment
- Safe off street parking
- Holiday club available during all school holidays
- Childcare vouchers accepted

**Looking for childcare? Call Danielle Brown to discuss your individual requirements or to arrange a visit.**



**MELLING WITH WRAYTON  
COMMUNITY GROUP**

MELLING WITH WRAYTON



Keep in touch with the latest goings on by joining the new Melling with Wrayton Community Group on Facebook. All welcome!

**WILL HAMBLING**

**PAINTING & DECORATING**

**INTERIOR & EXTERIOR**

**[WILL.HAMBLING@SKY.COM](mailto:WILL.HAMBLING@SKY.COM)**

**07858  
572 336**



## COOKING CORNER ... SALAD

### INGREDIENTS

- 750g new potatoes, cut into generous bite-size chunks
- 1 tbsp olive oil
- 20g butter
- 2 large onions, thinly sliced from tip to root
- 2 garlic cloves, thinly sliced
- Large handful fresh flatleaf parsley, coarsely chopped
- Small bunch fresh chives, finely chopped
- 150g soft blue cheese, e.g. stilton
- A couple of handfuls of interesting salad leaves

### DRESSING

- 2 tbsp extra-virgin olive oil
- 2 tsp Dijon mustard
- 2 tsp caster sugar
- 1 tbsp cider vinegar

### METHOD

For the dressing, put all the ingredients in a small bowl or jug, season with salt and pepper and whisk vigorously to combine. Set aside while you make the salad.

Put the potatoes in large pan of well salted water. Set the pan over a high heat and bring to the boil. Simmer the potatoes until they're tender - about 15 minutes. Drain and leave to steam dry.

Set a large frying pan over a medium heat. Add the olive oil and butter then, when it's bubbling away, scatter in the sliced onions and garlic along with salt and pepper. Cook gently for 15-20 minutes until the onions are soft and tender and starting to caramelize around the edges. Add the potatoes to the pan, scatter over the parsley and chives and drizzle over half the dressing, then turn everything in the pan to combine.

Tumble the potato mixture onto a large serving platter and crumble over the blue cheese. Dress with the remaining dressing and arrange the salad leaves over the warm salad. Serve straightaway.



# Charlotte Mason Pilates

Specialising in; sports specific Pilates,  
injury prevention and rehabilitation and  
pre and post natal fitness

Train 1 to 1 or in a small group sessions  
in the studio or at your home

Get in touch with Lottie to find out more:  
[charlottemasonpilates@outlook.com](mailto:charlottemasonpilates@outlook.com)  
07791704014

Qualifications: Level 3 Pilates, Level 3 Personal Training, Pre and  
Post Natal Exercise Programming, GP Exercise Referral – lower  
back pain and rehabilitation

## Lune Valley Physiotherapy

Grad Dip Phys MCSP HCPC

Wanting to regain ability after illness or surgery?

Stiff and sore after an accident, broken bone or new joint?

Have tightness after surgery, accidents or radiotherapy?

Diagnosed with a life limiting or degenerative condition?

**07934 785 797 leahthephysio@gmail.com**

**www.leahthephysio.co.uk**

Specialist experience with scarring after surgery,  
accidents and radiotherapy.



## MELLING ST WILFRID CE PRIMARY SCHOOL

'FOR THE LOVE OF LEARNING, FRIENDSHIP AND FAITH.'

*Melling St Wilfrid CE Primary School*

*'For the love of learning, friendship and faith.'*

For our Coronation party in school we enjoyed barn dancing, cakes, singing, worship with Rev Jane and chat. Thank you to all who came to join in.

This week our Y6 and Y2 children have taken their SATs tests and Y6 enjoyed an end of SATs ice cream treat. Next week the Upper Juniors will take part in a slave trade trail about the history of Lancaster around the quay and Maritime Museum. All the juniors will also be taking part in the Lune Valley cross country race at Tatham Fells next week.



### DECARBONISATION PROJECT UPDATE

Our new heating system in school is up and running and the whole decarbonisation project at school is nearing the end. Blackburn diocese applied for a grant to update schools to become carbon neutral. As we had an oil-fired boiler and heating system



# News From Melling And Wrayton

pipework which needed updating we were chosen, along with 2 other local Church schools in the Lancaster area, to be the first schools in the area to undergo the decarbonisation process. The work has been extensive with solar panels, insulation, air source heat pumps with all new pipework, new windows and doors and LED lighting. We are pleased we have had the work done but are now looking forward to it being finished!



## **DON'T FORGET- COME AND JOIN US!**

Every Thursday we have Diddi Dance lessons. These lessons are free to attend for all toddlers and preschoolers in the area. Lessons are at school at 11:15am every Thursday during term time and there is no need to book- all are welcome.



*Fiona Ip. Headteacher*



**ST MARY'S PARISH, HORNBY, with  
 OUR LADY'S, CATON and ST JOSEPH'S, KIRKBY LONSDALE**  
 Parish Priest: Fr Michael Docherty  
 Tel: 01524 21246

For times of services, newsletters & general information during the pandemic  
 please go to our website:

[www.lunevalleycatholics.org.uk](http://www.lunevalleycatholics.org.uk)



CATHOLIC CHURCHES IN THE LUNE VALLEY  
*Hornby, Caton and Kirkby Lonsdale*

**Sam Watson**  
 Meadowlands, Main Street,  
 Arkholme,  
 Carnforth  
 01524237728  
 07789 901329  
[www.wood4thetrees.com](http://www.wood4thetrees.com)  
[wood4thetrees@outlook.com](mailto:wood4thetrees@outlook.com)  
 Tree Care and Forestry,  
 Pruning, Thinning and Reductions  
 Hedging Work

<b>BRAKEBURN</b>	fransa
	<i>lily &amp; me</i> 
	
<b>ROBELL</b>	SEASALT CORNWALL
<b>Tamaris</b>	thought
	<b>White STUFF</b>

---

	<b>Market Square    Kirkby Lonsdale    015242 71390</b>
--	---

## HORNBY PENSIONERS

### EVENTS DURING JUNE



Dominoes Evenings will be held on alternate Saturdays on the ground floor of The Institute, beginning at 7pm. Those evenings being on June 10th and 27th.

No previous experience of the game is needed and everyone is welcome.

### HORNBY PENSIONERS TRIPS

It is that time of year again. Hooray!!

#### Tuesday 13th June

Our first excursion of the year will be to **Hebden Bridge**, with an initial stop at **Oswaldtwistle Mills**. On our return, we will be making a stop at **Howarth**.

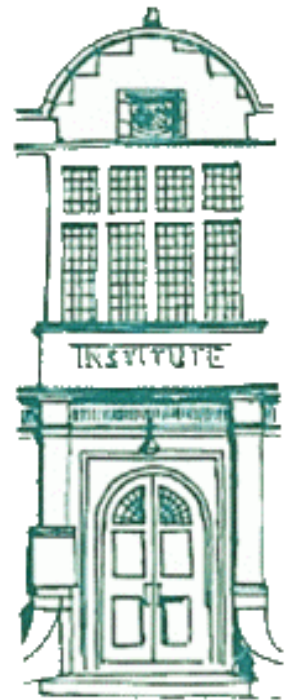
Members should note that there will be areas during this excursion, which will require caution, if you have any mobility issues.

The cost of this excursion will be £12 for members and £14 for non- members.

Payment can be made to Kath Helme at the Institute on Tuesdays 10am until 11am and Wednesdays from 10am until 12 noon.

Pick up points begin at the top of the village near Hornby Bank at 9.00am

We plan to return to Hornby no later than 7.00pm.





## Hornby Drama Group

will present

### ***'Crawl to be Kind'***

by Troy Banyan

A one-act comedy. Mrs Crawley finds an unexpected and scary resident when she moves into her new house!

Wednesday 14th June & Friday 16th June

at 7.30pm, Hornby Institute

[www.hornbydrama.org.uk](http://www.hornbydrama.org.uk)



**Busy Bodies Pre-School**  
c/o Melling St Wilfrid Church of  
England Primary School,  
Lodge Lane,  
Melling,  
LA6 2RE  
015242 21538 Ext 2

*All 3 to 4 year olds can access  
15 hours per week of free early  
years entitlement.  
Some 2 year olds are also  
eligible if criteria met.*

**Session Times** - Monday, Tuesday and Thursday

- Morning session: 9am - 12.30pm, £14 (includes lunch period)
- Afternoon session: 12.30pm - 3pm, £10
- Full day: £24

(A school lunch can be provided upon request for £1.10)



## LUNESDALE PROBUS CLUB - HORNBY

### JUNE MEETINGS

#### **Boats, Bats and Battle of Britain!**

The June programme will consist of two very diverse sessions and an interesting away day.

On **Monday 5th June** we welcome Commander Bernie Thompson RN Rtd to tell us the unbelievable story of X Craft miniature manned submarines and their use in wartime.

On **Monday 19th June** A talk by Gail Armstrong on the local Bat population and why we should love them!

And on **Thursday June 15th** we visit the Spitfire Collection at Squires Gate airfield Blackpool. For a private visit to the Lytham St Anne's Hangar 42 restoration and workshop collection. There are several Spitfire replicas and a Hawker Hurricane MKI along with a unique collection of wartime RAF Airfield vehicles and equipment.

Morning departure from Hornby. After the airfield visit a short diversion to Lytham before heading back via The Flower Bowl/Barton Grange Garden Centre.

Bibby's coaching and Admission, inclusive price £20pp. Guests welcome.

Lunesdale Probus Club meetings are held on the first and third Monday of each month. Guests, friends and visitors are always welcome to join us at the Hornby Village Institute at 10.30 hrs for coffee and chat before each meeting.

**No obligation to join - just come along and enjoy a nice social break from routine.**

For further details or any information on this or other Lunesdale Probus Club matters please contact:

*Roger Carter.*  
015242 22283



# CORNVALE

BUTCHERS & FINE FOODS



YOUR LOCAL BUTCHER DELIVERING STRAIGHT  
TO YOUR DOOR

- Lune Valley Lamb
- Locally Sourced Beef
- Saddleback Pork
- English Poultry
- Award Winning Sausages & Burgers
- Meat Packs, BBQ & Bulk Buy Deals.....
- Wild Venison & Game, Local Jams & Chutney
- Free Range Milk, Fresh Fruit & Vegetables



[Cornvalefoods.co.uk](http://Cornvalefoods.co.uk)

Order Online & Pick Either  
1. Delivery on Your Chosen Day.  
2. Collection from the Unit.

Station Yard,  
Melling  
LA6 2QY

Prefer to discuss your requirements then give  
us a call or pop in for a chat !!

015242 22420

## HORNBY DISTRICT RAMBLERS 2023 PROGRAMME

Meet at Hornby Car Park to leave at 9-30 am prompt - Or at parking area for start of the walk

DATES	DISTANCE	LEADER(S)	AREA
JUNE 10th	4- 6 miles	Joan	Geerstones
JUNE 24th	6-8 miles	Jenny	Around Crook
JULY 8th	4-6 miles	Chris	To be decided
JULY 22nd	6-8 miles	Richard	To be decided
AUGUST 12th	4-8 miles	Chris	To be decided (Only one walk this month)
SEPTEMBER 2nd	4-6 miles	Peter Edge	Abbystead or Clapham
SEPTEMBER 23rd	6-8 miles	Jenny	Littondale (Yorkshire Dales National Park)
OCTOBER 14th	4-6 miles	Ros	Hawes
OCTOBER 28th	6-8 miles	Peter Edge	Torver
NOVEMBER 11th	WALK-AGM and Lunch	COMMITTEE	To be decided
DECEMBER 9th	4-6 miles		To be decided

### CONSTITUTION OF THE CLUB

1. The club is Hornby District Ramblers
2. The club exists to provide guided rambles for the enjoyment of the members
3. A committee of a chairperson, secretary, and treasurer and four members will be elected at the AGM
4. The AGM will be held in November
5. The annual subscription will be fixed at the AGM
6. Third party insurance is provided
7. Members walk at their own risk
8. Visitors on rambles are welcome
9. All children must be accompanied by a responsible adult
10. NO dogs are allowed on rambles
11. This constitution can only be amended at the AGM

### 2023 COMMITTEE

**Chair:** Jenny Herd, 015242 21690

**Secretary:** Peter Edge

**Treasurer:** Chris Kynch

Richard Kenyon - Ken Sedgwick - Ros Davey

A contribution for 2023 towards fuel costs, if sharing £3 per person for the shorter distance or £4 for a longer distance.

Phone Jenny Herd for details of walks:

**015242 21690**



