

July/August 2026

THE MELLING CHRONICLE

Comedy of Errors

Jazz

Cooking Corner...BBQ Marinades

The Melling Chronicle

In This Month's Issue

News From Melling And Wrayton.....	4
Parish Council News.....	4
St Wilfrid's Trust.....	5
St Wilfrid's Church.....	6
Melling Village Hall Events.....	8
Cooking Corner..Marinades for your BBQ.....	11
News From The Neighbours.....	12
Tunstall WI.....	12
Hornby Pensioners.....	18
Hornby District Ramblers.....	21
Lunesdale Probus Club.....	22

Contacts

Parish Council Chairman	Sandra Towers Tel: 21399 Email: sandramtowers@yahoo.co.uk
Parish Clerk	Claire Helme Tel: 07845 186958
Parish Council Website	Anthea Wilkie Tel: 0770 8882989 Email: mellingwithwraytonwebsite@gmail.com
Melling Village Hall	Mary Jackson Tel: 07970705496
Melling St Wilfrid's School	Tel: 21538
Melling Chronicle Editor	Anthea Wilkie Tel: 0770 8882989 Email: mellingchronicle@yahoo.co.uk

EDITORIAL TEAM

Editor: Anthea Wilkie, assisted by Sandra Towers

Delivery Team: Judith Jones, Howard Lewer, Warren Mockett, Robbie Murray, Becky Preston
Sophie Ridsdale, Cath Taylor

Advertising and Invoices: Claire Helme (Parish Clerk)

3 July	Pub Night - Melling Village Hall	7.30pm
4 July	Jazz in Hornby - Hornby Institute	Page 10
4 July	Dominoes and Whist Evening - Hornby Institute	7pm
6 July	Lunesdale Probus Club - Talk	Page 22
11 July	Ramblers Walk - Hornby Car Park	Page 21
17 July	Hornby Pensioners Trip - Hornby Institute	Page 18
18 July	Dominoes - Hornby Institute	7pm
21 July	Parish Council Meeting - Melling Village Hall	6pm
23 July	The Comedy of Errors - Leighton Hall	Page 9
25 July	Ramblers Walk - Hornby Car Park	Page 21
27 July	Craft Day - Melling Village Hall	10am
1 Aug	Dominoes and Whist Evening - Hornby Institute	7pm
8 Aug	Ramblers Walk - Hornby Car Park	Page 21
11 Aug	Hornby Pensioners Trip - Hornby Institute	Page 18
15 Aug	Dominoes - Hornby Institute	7pm

MELLING CHRONICLE

The Chronicle is available in PDF format at www.mellingwithwrayton.net

Please send items for the Melling Chronicle to the editor: mellingchronicle@yahoo.co.uk

Please supply text as a Word document or by email. Photographs are always welcome at a high resolution. If you have an interesting, relevant, high resolution image for the front or back cover, please send it in for consideration.

The Melling Chronicle is a forum open to everyone in the village. The views expressed in articles and letters are not necessarily the views of the Editor or the Parish Council, and they cannot accept responsibility for goods or services advertised in the magazine, although advertisements are accepted in good faith. The Editor reserves the right to edit or exclude items submitted for publication, and no liabilities are implied or accepted.

Deadline for any contribution is the 20th of the preceding month.

The Melling Chronicle is published monthly except for January and August.

ADVERTISING

Please contact: The Parish Clerk mellingwithwraytonpc@gmail.com

Charges for 10 editions/Full Page £90.00/Half page £55.00/Quarter page £40.00

Single entry: By negotiation

Please note that anyone submitting an article, notice, letter or advertisement for inclusion in the Melling Chronicle is responsible for the content (including factual accuracy) this rests solely with the originating individual or organisation.



PARISH COUNCIL NEWS

THE PARISH COUNCIL HAS A NEW WEBSITE AND NEW EMAIL!
In order to conform with government rules our new website is

<https://www.mellingwithwrayton-pc.gov.uk/>

this will exist along side the present website

<https://www.mellingwithwrayton.net/>

for the time being.

If you have any queries, please email the clerk

clerk@mellingwithwrayton-pc.gov.uk

The next Parish Council meeting will be held on **Tuesday 21st July** in the Village Hall with the **Parish Forum at 6pm** and the **Parish Council meeting at 6.30pm.**

PLEASE SEND ME HOME!

Do you have a plain white orphan bowl, small or large plate in your cupboard that you can't really remember where you got it from?



Have you taken some food home from a Village Hall event and maybe haven't returned the crockery—please can we have it back!

No questions asked or fines incurred.

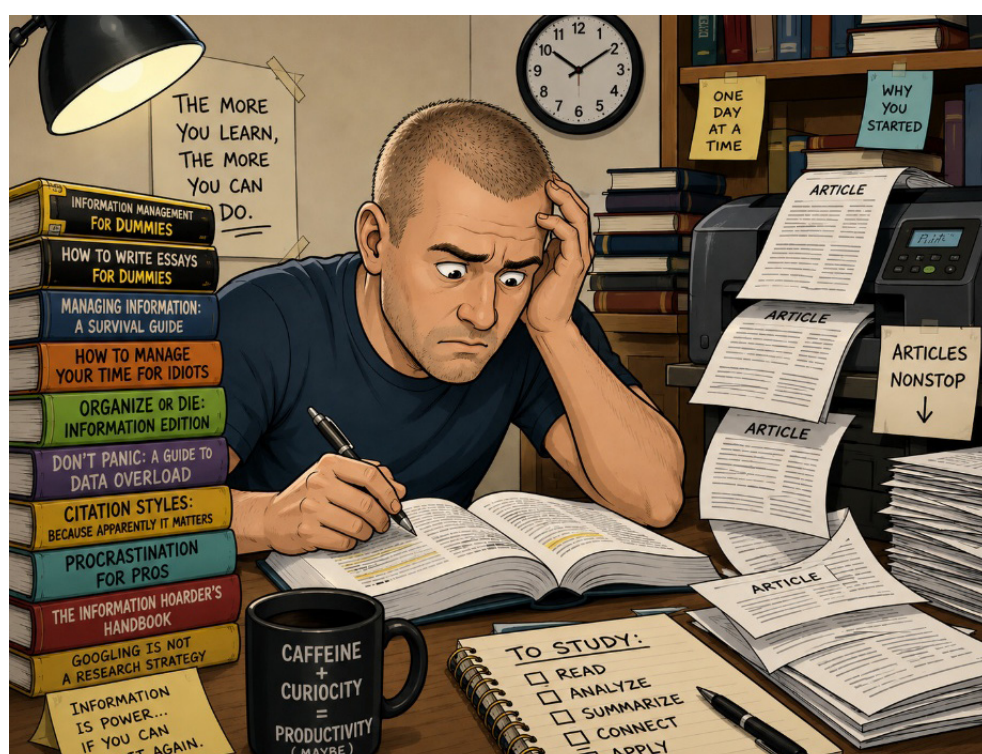
Please contact Mary 07970705496 or
Sandra 07713883632 to arrange return

ST WILFRID'S TRUST

You may be dreaming of your summer holidays but think ahead!

In September it will be time to think about submitting applications to the St. Wilfrid's Educational Trust ready for their autumn meeting...here is a message from one of this year's recipients

Until 12 months ago, whilst I was aware that there were educational grants available through the St. Wilfrid's Educational Trust, I had no idea that it could be used to support adult learners as well as those at school and college. After a passing conversation, I applied and was fortunate enough to receive a grant to support my studies during a part-time Master's degree.



The support has helped with the purchase of specialist academic books and some of the costs associated with printing research papers and technical articles used throughout the course (I had rather forgotten just how expensive academic books can be). I also suspect the postman may have wondered why increasingly heavy parcels have been arriving at the house over the past few months.

I am pleased to say that, as I come to the end of the first year of study, I have been achieving strong results and, in no small part, I credit this to the additional support that has been provided by the Trust. Although I am not entirely convinced that my printer nor my eyesight were quite as well prepared for it as I was!

I hope sharing my experience helps raise awareness that support is available locally, not only for younger students but also for adult learners.



NEWS FROM ST. WILFRID'S CHURCH

Congratulations to Rufus Brook-Thompson (and his mum Jennifer) for completing the Yorkshire 3 Peaks walk on a very hot day at the end of May. Rufus raised £1300 for church funds, as part of the Bishop's Challenge project.

We had some very successful heritage events last month.

Melling village institute welcomed around 60 people from near and far, on Tuesday 16th June, to find out more about Melling's early history. In her talk, amateur historian and resident of Melling, Debbie Shannon explored the reasons why St Wilfrid's Church (The Cathedral of Lune valley) is relatively so large for such a small village and what happened in the past to make Melling an important place. She discussed Melling within the



context of the Lune Valley, in pre-history and the Roman period. She explained how the key period for Melling was in the Early Medieval period and how the Roman road and crossing point on the river meant that Melling developed into a large, rich parish in the 8th-10th Century.

The Norman's capitalised on this wealth and the Motte and Bailey helped them do that.





After the presentation, the audience had the opportunity to look at resources and displays about Melling's history as well as look at some medieval and later "finds" from the village! The talk was part of the Melling Heritage week, raising funds for the Church Building Trust.

The heritage day was very well organised, with a number of displays in the church & institute, bell ringing, a performance by the Strummers, an organ recital and the Gladly Solemn Sound choir giving a

performance of early church music during the afternoon. Refreshments were served throughout the day in the Institute. The event was well attended and huge thanks go to Debbie, Sue and Angela for all of their hard work to make the event happen and to everyone who helped. The heritage events raised over £1100 in cash donations, with Gift Aid being able to be claimed on this amount. Further donations were given through the church's Just Giving page.

Hopefully the above has raised further awareness about the importance of St. Wilfrid's and the desire to keep the building going. The Bishop of Blackburn has taken a personal interest in the plight of the church and has written a letter, which will be distributed throughout the village at the end of August. Bishop Philip will host an open meeting, in the church on Monday 28th September, to discuss the situation and answer questions. We would encourage as many people as possible to attend this meeting.

Cathy Brough





MELLING VILLAGE HALL EVENTS

Are you interested in joining the committee?

Why not contact:

Mary: 07970705496

Sandra: 07713883632

for more info.

Melling Craft Day

Wednesday
29th July

See poster for further details
please book by

Monday 27th July

There will be no
Craft Day in August.



MELLING VILLAGE HALL PUB NIGHTS

Friday 3rd July, from 7.30pm.

there will not be a pub night in August

Friday 4th September from 7.30pm

Why not come along, meet up with friends and
have a great start to the weekend.



MOVIE NIGHT: There will be no film night in July or August

LOOKING AHEAD.....IN MELLING VILLAGE HALL

	Pub Night	3rd July 2026	Friday 7.30pm
	Craft Day	29th July 2026	Wednesday 10am-4pm
	Pub Night	4th September 2026	Friday 7.30pm
	Film Night	18th September 2026	Friday 7.30pm
	Craft Day	30th September 2026	Wednesday 10am-4pm



EASYFUNDRAISING FOR THE VILLAGE HALL

Remember Melling Village Institute are now registered with *easyfundraising*, which means you can raise FREE donations for us every time you shop online.

Over 7,000 brands will donate to us when you use *easyfundraising* to shop with them - at no extra cost to yourself!

These donations really mount up and make a BIG difference to us, so we'd really appreciate it if you could take a moment to sign up and support us. It's completely FREE and only takes a moment.

Scan the QR code or you can find our *easyfundraising* page at: www.easyfundraising.org.uk/causes/melling-village-institute/?utm_medium=email&utm_campaign=pmc&utm_content=gs-email1.

They also have an app. Thank you.



Shakespeare in the Garden at Leighton Hall

Thursday 23rd July

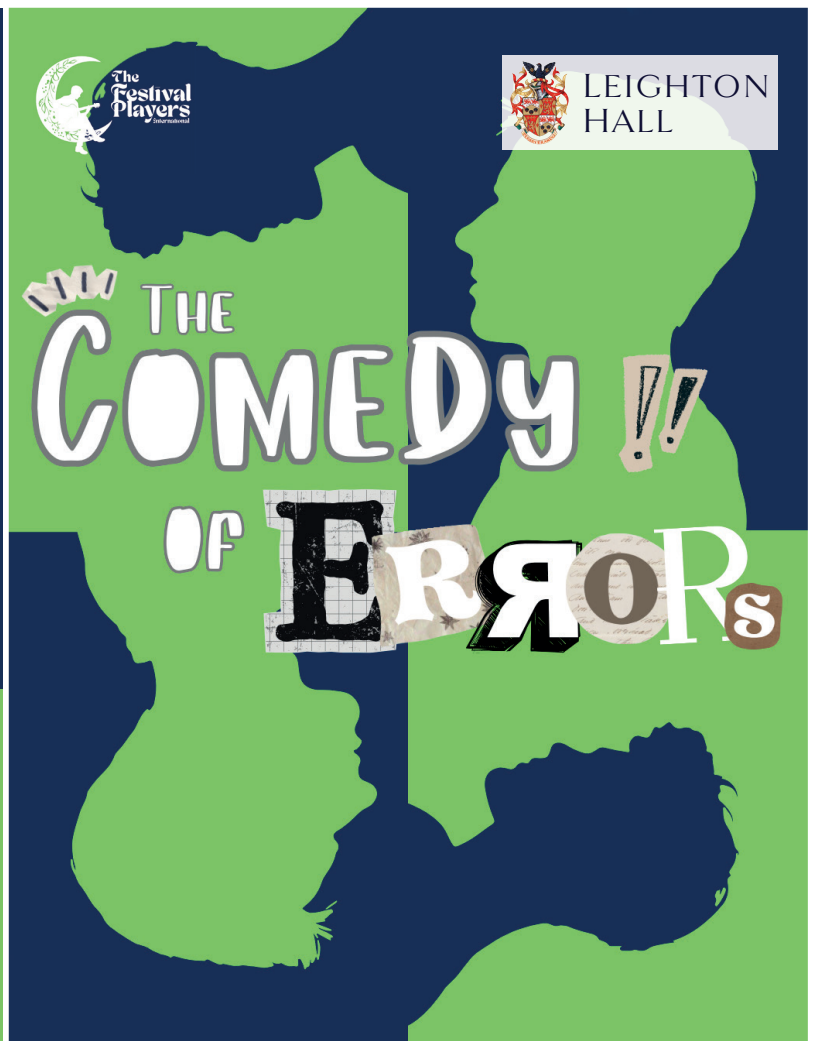
Leighton Hall, Carnforth, LA5 9ST

Early bird tickets available
at www.leightonhall.co.uk
Adult £19 / Child £11
On the gate £21 / £13

Open Air – Rain or Shine! Bring your own seat, a blanket or warm clothes.

Grounds open for picnics at 6:00pm
Play starts at 7:00pm

(Please note earlier show time than previous years)





THE VILLAGE TRUST
presents **JAZZ IN HORNBY:**

High Society

Led by Bruce Canaffin on Clarinet

“A local Trad Band”

Saturday 4th July, 2026

Bar Opens 7.30pm

Music 8pm

Tickets £15

On the door, on-line, or ring 015242 22227

Hornby Village Institute, Main Street, Hornby, LA2 8JR

www.hornbyinstitute.org.uk

Charity Number 1163973

COOKING CORNER ...MARINADES FOR YOUR BBQ!!

FOR CHICKEN:

- 1 garlic clove, crushed
 - 2 tbsp lemon juice
 - 2 tbsp olive oil
 - 1 handful of fresh herbs such as parsley, basil or coriander, finely chopped
- Marinate for at least an hour.**

FOR FISH OR CHICKEN:

- thumb-sized piece of ginger
 - chilli (deseeded and chopped—anything from a small piece to a whole chilli. You know your taste)
 - 7 tbsp sesame oil
 - 2 tbsp fish sauce
 - 40g desiccated coconut
- Marinate fish 30 mins-1 hour; chicken for at least an hour.**

FOR STEAK:

- 120ml olive oil
 - 75ml soy sauce
 - 75ml lemon juice
 - 30ml Worcestershire sauce
 - 1 tbsp minced garlic
 - 2 tbsp Italian seasoning
 - 1 tsp black pepper
 - 1 pinch chilli pepper flakes
- Marinate for 4–8 hours**



theWI

INSPIRING WOMEN

TUNSTALL WI

Our speaker in April was unable to attend due to ill health but we were delighted to welcome back Jack the Gardener. He first showed us how to deal with our spent spring bulbs following which members were delighted to participate in a “*Gardener’s Question Time*”. Also, in April several members enjoyed an afternoon tea at the Traddock in Austwick. Both food and surroundings were lovely. April was a busy month as the president attended the Lancashire Federation Council meeting at the Lowther Pavilion in Lytham.

In May, 19 members gathered at the Pheasant in Casterton where they enjoyed an evening meal. The speaker in May was Kim Bradshaw from Zero Pantry in Kirkby Lonsdale. She shared her passion for a plastic free society and showed members how to make their own cleaning products.

The speaker in June was Sue Bull who told us all about “*King Richard 111 and the Great Feud*” with particular reference to the connection with nearby Hornby Castle.

Coming up in July members are looking forward to a talk by Katherine and Aiden from “*Lovingly Artisan*” and also the WI’s Annual Garden Party to be held at the home of one of our members.

Tunstall WI meets at 7.30pm on the 2nd Wednesday of each month at Tunstall Village Hall.

Why not come along as a visitor and see if the WI is for you?

Sheila Mitchell
(President)





**1 Station Road
HORNBY**

T: 015242 22288

E: info@hornbydaynursery.co.uk

Care & Commitment for your Peace of Mind

Ofsted rated us Outstanding in all areas

- Qualified staff who positively enjoy working with children
- Flexible opening hours to cater for most needs
- 30 hours funded childcare for eligible children aged 9 months to 4 years
- Dedicated Baby & Toddler facilities
- Home cooked meals with special diets catered for
- Secure outdoor play areas in rural environment
- Safe off-street parking
- Holiday club available during all school holidays

Looking for childcare? Call Danielle Brown to discuss your individual requirements or to arrange a visit.



Busy Bodies Pre-School
c/o Melling St Wilfrid Church
of England Primary School,
Lodge Lane, Melling,
LA6 2RE
015242 21538 Ext 2

Available for
2, 3 & 4 year olds

Session Times ·

Full days Monday, Tuesday and Wednesday.



Lowfold

landscapes LTD

All aspects of landscaping and garden maintenance

- Stone & porcelain paving
- Decking, driveways & fences
- Turf & lawn care and treatments
- Planting schemes
- Hedge cutting
- Pressure washing

Phillip Howson - 07816 813 848
lowfoldlandscapes@hotmail.co.uk



· Ade to B ·

Private Hire Taxi

Friendly and professional for all occasions

Airport - Shopping - Train station - Evening out - Day out

📞 07901 752 892 📷 ade_to_b

Ade Francis

Excellent rates
adrianfrancis103@gmail.com

Based in the Lune valley,
meeting your needs

Your dog can't clean up after itself,
it's up to you!



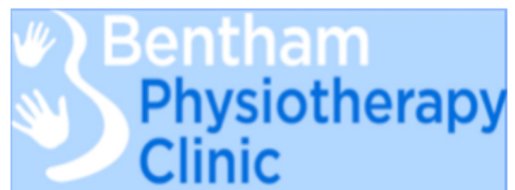
Fixed Penalty Scheme in operation. Maximum fine £1,000

Take Pride in your area:

Report dog fouling and offenders at www.lancaster.gov.uk/dogpoo
or 01524 582935



LANCASTER
CITY COUNCIL
Promoting City, Coast & Countryside



**For Professional, Effective,
Chartered Physiotherapy,
including sports injuries,
backs, necks and
acupuncture.**

AXA, AVIVA,
BUPA authorised clinic.

Phone 015242 62216

Website: www.benthamphysio.com

Email: info@benthamphysio.com



LEIGHTON HALL

M6 Exit 35, Carnforth
Lancashire LA5 9ST
T: 01524 734474

Book tickets online at
www.leightonhall.co.uk

A DAY
OUT FOR
THE WHOLE
FAMILY

Entertaining House Tours ~ Beautiful Gardens ~ Spectacular Special Events
Charming Tea Rooms ~ Birds of Prey Display ~ Play Area ~ Tree Faces Trail



- Classic & Performance Motor Show - Sunday 12th July
- Shakespeare in the Garden - Thursday 23rd July
- Motorcycle Hill Climb - Sunday 26th July
- Tennants Valuations Day - Tuesday 4th August
- The Kirkby Lonsdale Motoring Club Car Rally - Sunday 16th August
- Mourholme Local History Weekend - Sat 5th and Sun 6th September

**SPECIAL
SUMMER
EVENTS**

OPENING TIMES

July: Tues, Wed, Thurs 1:30 – 5:30
August: Tues, Wed, Thurs, Sun and
Bank Holiday Monday 1:30 – 5:30

*The owners reserve the right to restrict
access to Leighton Hall, the grounds
and parkland on certain days.*

ANDREW WHITAKER

*Gardener
Painter/Decorator*

Tel. (01524) 69806
Mob. 07900 905 026

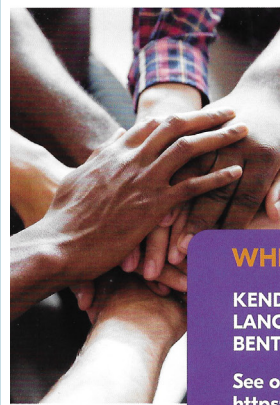
awhitaker112@googlemail.com

Have you been
affected by
Prostate Cancer?

**The Bay
Prostate Cancer**

SUPPORT GROUP

Have you been diagnosed or
affected by Prostate Cancer?
You are not alone.



WHERE:

KENDAL: 1st Friday of each month
LANCASTER: 2nd Tuesday of each month
BENTHAM 2nd Thursday of each month

See our website for details:
<https://tbpcsg.org>

CONTACT US:

Email us: tbpcsg@pm.me
Call us: 07867276512
Cancer Care: 01524 381820



Come along to a meeting and
have a chat and a cuppa!

tackle
prostate cancer

MACMILLAN
CANCER SUPPORT

Craft Day

Last Wednesday of the month

10am - 4pm

Melling Village Hall



PLENTY OF ROOM-LARGE
TABLES!



BRING YOUR OWN MATERIALS
& EQUIPMENT

GOOD COMPANY

WARM!



**£12 TO INCLUDE
A SOUP AND SANDWICH LUNCH.
BOTTOMLESS TEA AND COFFEE**

BOOK YOUR PLACE BY THE **MONDAY BEFORE**
call Sandra 07713883632 or Mary 07970705496

HORNBY PENSIONERS - JULY/AUGUST 2026



DOMINOES AND WHIST EVENINGS

These evenings will begin at 7pm in Hornby Institute.

Meetings take place in Hornby Institute.

For information regarding these events, please contact:

Eileen Barton on 07780461517

- 4th July: Dominoes and Whist
- 18th July: Dominoes
- 1st August: Dominoes and Whist
- 15th August: Dominoes

SUMMER SEASON OF TRIPS CONTINUES.

Tuesday 7th July: *Please note the earlier date.* Full day out from 9am to 7pm.

The day begins with a visit to **Hayes Garden centre** in **Ambleside**, where you can browse the goods on offer and perhaps enjoy a coffee in their café on the First floor. A lift is available. The coach will then travel on to **Keswick** where you can either spend time in the numerous shopping outlets or visit the Lake or the Park. Here there will be time to explore and have lunch. From Keswick the coach will travel to **Tebay**, where you may wish to browse and have a cup of tea, to finish off your day. The cost of the trip is £12 per member or £14 for non-members.

Tuesday 11th August: This is a shorter trip 10am until 6pm to the beautiful small town of **Clitheroe**. There are a number of small independent shops to explore, or the outdoor market, which is open from 9.30am until 12 noon

on Tuesdays. The Castle grounds and museum are also open from 11am until 4pm. You may wish to have a light lunch during your stay here. We then continue on from Clitheroe to **Holden Clough**, a stylish, family run, plant nursery, for a browse and a late afternoon tea or coffee break. Again, the cost of the trip is £12 for members and £14 for non-members. You may book these trips by visiting Kath Helme at the Hornby Institute on Wednesday or Thursday morning between 10a.m. and 12 noon. You may also contact Kath at these times on the Institute Number of 015242 2227. Booking early is recommended.



dp JOINERY

- Fitted wardrobes, furniture and shelves
- Window and door fitting, and repair
- Glazing and reglazing
- Kitchen installation
- Wooden flooring
- General Joinery and Handyman service
- Painting and decorating

No job too small, Don't hesitate to contact me to discuss your requirements

David Pickering, DP Joinery

T: 07527860948

E: dpjoineryuk@gmail.com



MELLING WITH WRAYTON
COMMUNITY GROUP

MELLING WITH WRAYTON



Keep in touch with the latest goings on by joining the new Melling with Wrayton Community Group on Facebook.

All welcome!

Irene Taylor Hearing Centres

Specialists in Hearing Aids
and
Hearing Protection

Ear wax removal via
micro-suction

Salt Pie Lane,
Kirkby Lonsdale
LA6 2BH

015242 73589

www.prestonhearingcentre.co.uk

Est. 1980

B&W Funerals

(Brown & Whittaker)

James G Macdonald & Tara Wilson

Private Chapel of Rest



Ingleton, Burton, Bentham, Austwick,
Clapham, Settle, Wray, Hornby, Caton,
Kirkby Lonsdale & all the surrounding areas

We offer our own Funeral Plans on request

6 Chapel Lane, Ingleton, Carnforth LA6 3FX

jmfunerals@gmail.com

Tel: 015242 41293 or 61370

Mob: 07758 002260 or 07912 568672 (Tara)

24 Hour Service - call 015242 41293



Find us on Facebook



The **Catholic church** of:

St Mary's (Hornby),

is now being looked after by the clergy at the Cathedral Parish in Lancaster.

The serving clergy are:

Rev Fr John Millar (Cathedral Dean) & Rev Fr Philip Wrigley.

If you need to contact the clergy, please email us at:

clergy@lancastercathedral.org.uk Website: www.lancastercathedral.org.uk

Parish Weekend Mass times for this area:

Saturday Vigil:

18:00 - St Mary's, Hornby

18:30 - Cathedral, Lancaster

Sunday:

09:00 - St Thomas More, Lancaster

10:30 - Cathedral, Lancaster

18:30 - Cathedral, Lancaster



Sam Watson
Meadowlands, Main Street,
Arkholme,
Carnforth
015242 37728
07789 901329
www.wood4thetrees.com
wood4thetrees@outlook.com
Tree Care and Forestry,
Pruning, Thinning and Reductions
Hedging Work

JOULES
— EST. 1989 —

Joules Kirkby Lonsdale
015242 71390
Market Square, Kirkby Lonsdale, LA6 2AN

HORNBY DISTRICT RAMBLERS 2026 PROGRAMME

Meet at Hornby Car Park to leave at 9.30am prompt - Or at parking area for start of the walk

DATES	DISTANCE	LEADER(S)
JULY 11th	4-6 miles	JANET - (janetmkenyon@gmail.com)
JULY 25th	6-8 miles	CHRIS - (0711 384888)
AUGUST 8th	4-6 miles	APRIL AND JOHN - (07929 004215)
SEPTEMBER 12th	4-6 miles	SUSAN RIGBY - (srigby@btinternet.com)
SEPTEMBER 26th	6-8 miles	JENNY H -(015242 21690)
OCTOBER 10th	4-6 miles	HAZEL - (hazel.ellerbysayer169@btinternet.com)
OCTOBER 24th	6-8 miles	PETER EDGE - (015242 22176)
NOVEMBER 14th	WALK, AGM and lunch	COMMITTEE
DECEMBER -12th	4-6 miles	JENNY H (015242 21690)

CONSTITUTION OF THE CLUB

1. The club is Hornby District Ramblers
2. The club exists to provide guided rambles for the enjoyment of the members
3. A committee of a chairperson, secretary, and treasurer and four members will be elected at the AGM
4. The AGM will be held in November
5. The annual subscription will be fixed at the AGM
6. Third party insurance is provided
7. Members walk at their own risk
8. Visitors on rambles are welcome
9. All children must be accompanied by a responsible adult
10. NO dogs are allowed on rambles
11. This constitution can only be amended at the AGM



A contribution for 2026 towards fuel costs, if sharing £3 per person for the shorter distance or £4 for a longer distance. ANNUAL SUBSCRIPTION £5-00.

Phone Jenny Herd for details of walks: 015242 21690 or contact the walk leader

LUNESDALE PROBUS CLUB

Looking out of my window at an overcast sky and deciding if I should wear a fleece today, whilst listening to a weather forecast that tells me the temperature is above average for this time of year and we are having a sunny day, I do wonder if the BBC knows that there is such an area as the North West of England.

It must have been different in times past though as thousands of people flocked to our seaside to enjoy a sunny holiday on Morecambe's beaches! And not just there either as we learned in a fascinating and immensely informative talk from Mike Winstanley just a few days ago. His tour of the seaside places of the North West, from the famous to the virtually forgotten was utterly riveting and generated many reminiscences from all present.

On **July 6th** we will be focusing on a very different aspect of life with a talk from **Steve Slater** on the work of the **Air Ambulance service**, one of those things we all hope we will never need but whose presence in our skies is so reassuring. We are awaiting confirmation for our second speaker in **July, on the 20th**

With holidays still very much in mind, August sees us taking a break from our regular schedule, so we will meet again on **September 7th** when we are hoping to run a visit to the wonderful open air museum at Beamish, which in a way complements Mike Winstanley's talk by bringing to life the world of the urban working class for whom the seaside holiday provided a much needed escape from the relentlessness of everyday life. If you would like to join us on this trip, please let us know at the July meetings. We are very much looking forward to our **September 21st** meeting and hearing from Linda Powell on Pharmacy over the years. Linda had many years working in this sector and has an interesting story to tell!

As ever, we meet at Hornby Institute on the first and third Mondays of the month from 10am for coffee and biscuits with our speaker taking the floor at 10.30am.

We welcome members, friends, family, guests! Any questions to...

John Poole (Secretary, 0773027032)





Kirkby Lonsdale
HOME HELP

CLEANING
ERRANDS / SHOPPING
DOMESTIC HELP / HOME CARE

20 minute welfare checks or longer appointments available.

Independent, qualified carer,
Local, fully insured, DBS checked.

www.kirkbylonsdalehomehelp.co.uk
sue@kirkbylonsdalehomehelp.co.uk

07481896573

Lune View Garage Ltd. 

**Vehicle Servicing,
Diagnostics,
MOT Testing
Exhausts, Clutches,
Timing Belts, Welding
Tyres,
Wheel Balancing &
Tracking
Air Conditioning Servicing
and Re-Charge
Full Valeting Service Available**

*Melling, Carnforth, LA6 2RB
Tel. 015242 21457
email: dsglover89@btconnect.com*



Graham Fawcett Plant Limited 015242 62888
Unit 3 Bentham Industrial Estate, Bentham LA2 7NB

HAYTER and TORO mower range now in stock.

**GARDEN MACHINERY
SERVICE & SALES**

Tractor Mowers • Self Propelled & Push Mowers
Chains, Bars and Accessories • Oil •
Chain and Blade Sharpening
Chainsaws • Hedge Trimmers • Strimmers • Blowers
*** ALSO, SERVICE OF ALL TYPES OF TRAILERS ***



HAYTER  

STIHL PRODUCTS IN STOCK. RANGE OF MOWERS IN STOCK. PART EX WELCOME.

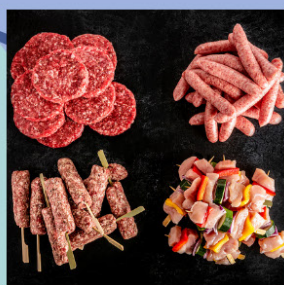
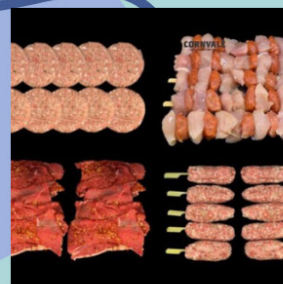
CORNVALE

BUTCHERS & FINE FOODS

SUMMER BBQ's

Need an excuse to have a BBQ with your loved ones, why not check out our website and get a shopping basket made and bought!

Everyone will leave the BBQ with full bellies and you will have empty plates meaning success all round!



CornvaleFoodsHome



Cornvale Fine Foods

SHOP ONLINE @ CORNVALEFOODS.CO.UK

015242 22420