

THE MELLING CHRONICLE

December/January 2025/26

Movie Night: Downton Abbey
Film and Afternoon Tea
Last Minute Christmas Cake

The Melling Chronicle

In This Month's Issue

News From Melling And Wrayton.....	4
St Wilfrid's Church.....	4
Melling Village Hall Events.....	8
Morecambe Bay Foodbank.....	11
Melling St Wilfrid CE Primary School.....	12
Cooking Corner...Last Minute Christmas Cake.....	14
Parish Council News.....	17
From your City Councillor.....	18
Obituary - Gerda Southwell.....	19
News From The Neighbours.....	20
Hornby Pensioners.....	20
Hornby District Ramblers.....	25
Lunesdale Probus Club.....	26

Contacts

Parish Council Chairman	Sandra Towers Tel: 21399 Email: sandramtowers@yahoo.co.uk
Parish Clerk	Claire Helme Tel: 07845 186958
Parish Council Website	Anthea Wilkie Tel: 0770 8882989 Email: mellingwithwraytonwebsite@gmail.com
Melling Village Hall	Mary Jackson Tel: 07970705496
Melling St Wilfrid's School	Tel: 21538
Melling Chronicle Editor	Anthea Wilkie Tel: 0770 8882989 Email: mellingchronicle@yahoo.co.uk

EDITORIAL TEAM

Editor: Anthea Wilkie, assisted by Sandra Towers

Delivery Team: Judith Jones, Mike Murray, Robbie Murray, Sophie Ridsdale (Wennington), Howard Lewer (Wrayton), Cath Taylor

Advertising and Invoices: Claire Helme (Parish Clerk)

Diary - December/January

5 Dec	Pub Night - Melling Village Hall	7.30pm
6 Dec	Dominoes Evening - Hornby Institute	7pm
9 Dec	Hornby Pensioners Christmas Party - Hornby Institute	12.30pm
9 Dec	Parish Council Meeting - Melling Village Hall	6pm
11 Dec	Film and Afternoon Tea - Melling Village Hall	2pm
13 Dec	Ramblers Walk - Hornby Car Park	Page 25
16 Dec	Movie Night - Melling Village Hall	7.30pm
20 Dec	Dominoes and Whist Evening - Hornby Institute	7pm
3 Jan	Dominoes Evening - Hornby Institute	7pm
10 Jan	Hornby Pensioners Coffee Morning - Hornby Institute	10am
10 Jan	Ramblers Walk - Hornby Car Park	Page 25
14 Jan	Melling St Wilfrid Primary School - Open Day	Page 12
17 Jan	Dominoes and Whist Evening - Hornby Institute	7pm
28 Jan	Craft Day - Melling Village Hall	10am
31 Jan	Dominoes Evening - Hornby Institute	7pm

MELLING CHRONICLE

The Chronicle is available in PDF format at www.mellingwithwrayton.net

Please send items for the Melling Chronicle to the editor: mellingchronicle@yahoo.co.uk

Please supply text as a Word document or by email. Photographs are always welcome at a high resolution. If you have an interesting, relevant, high resolution image for the front or back cover, please send it in for consideration.

The Melling Chronicle is a forum open to everyone in the village. The views expressed in articles and letters are not necessarily the views of the Editor or the Parish Council, and they cannot accept responsibility for goods or services advertised in the magazine, although advertisements are accepted in good faith. The Editor reserves the right to edit or exclude items submitted for publication, and no liabilities are implied or accepted.

Deadline for any contribution is the 20th of the preceding month.

The Melling Chronicle is published monthly except for January and August.

ADVERTISING

Please contact: The Parish Clerk mellingwithwraytonpc@gmail.com

Charges for 10 editions/Full Page £90.00/Half page £55.00/Quarter page £40.00

Single entry: By negotiation

Please note that anyone submitting an article, notice, letter or advertisement for inclusion in the Melling Chronicle is responsible for the content (including factual accuracy) this rests solely with the originating individual or organisation.



ST. WILFRID'S CHURCH, MELLING

I met with
my brother
David Gibson and
sister Sue Flowers

last night to discuss St Wilfrids and our
thoughts for the future.

I thought I would share my memories..I
was born in Melling and christened at
Melling. We attended church every Sunday
at 10am. My earliest memories are sitting
at the back of the church in the Melling
Hall pews (these were subsequently
removed) it's the area coffee is served.
Some of the wooden floor blocks were
loose and we could remove them to build
towers - this kept us amused during the
sermon but we were in trouble if /when
they were dropped! I also remember going
up to the vestry after church and helping
Grandad with counting the collection.

I attended Melling school and when Rev
Harry Fawcett (WHCF on the gate at
the entrance to the church yard is in his
memory) moved to the parish he came
to school to recruit for the choir. I think
we just had to be able to find hymns by
number. From then on I sat in the choir.
Mr Foxcroft played the organ my Gran, Mrs
Culpin, Miss Walters and Mrs Harrand sat
behind us and led the choir (but always
chatted through the sermon) - the boys
sat opposite. We were occasionally asked
to sing for weddings and we had an annual
choir trip visiting York and Chester.

One Sunday we noticed a window had
been broken and pieces were missing
Grandad found the broken glass and
repaired the window. I helped out with
Church flowers at Easter and Christmas
and when mum was away did the flowers
by the font with gladioli and seashells -
and Mrs Roberts gave me a mention in the
weekly report to the Lancaster Guardian.

Another memory is sitting in the belfry
watching Dad ring ..it's a great view of the
church and as I got older I learnt to ring.
We rang for Sunday services and weddings
also ringing at Tunstall and Kirkby.

Christmas in Melling Church was always my
favourite time of year, I remember when
I was first allowed to stay up for midnight
mass. The church looked beautiful -
decorated with flowers and with all the
candles lit in the candelabras .. which had
all been taken down and which we had
helped polish and reassemble earlier in
the month.

At Carol services toys were donated for the
children at Nazareth House in Lancaster
and one year we performed a Nativity play
where I was very proud to be Mary and had
to learn the Magnificat by heart.

On Mothering Sunday we helped put
the bunches of flowers together at the
vicarage and I remember using the mound
in the vicarage garden when discussing the
crucifixion. The Good Friday service was
also memorable with the altar stripped
and on Easter Saturday the church was
transformed when the church and porch
were decorated.

I see St Wilfrids, Melling as a key part of the village. A Grade 1 listed building, a place of worship and for the community with a full church for christenings weddings and funerals. I was married at Melling in Jan 2000 it's a beautiful church for a wedding. I understand that a substantial amount of money is required under the quinquennial review - I think it's important that such a historic building and key part of our village is preserved for future generations and available for all to visit - whether you sit quietly and enjoy the peace and tranquility, attend church, listen to the organ and church bells or enjoy the beauty/nature in the church yard or the view from the top of the tower.

The school **Christingle Service** is at St Wilfrids (Check date with Melling St Wilfrid's School)....

...and there is a church service at Melling on Sunday **21st December at 11.15am**

Looking forward to creating more memories
Angela McTavish, a.mctavish@btinternet.com

If anyone else would like to send other happy memories or photographs of St Wilfrid's to the Chronicle the next deadline for submissions is:
20th January 2026



Due to the safe removal of the Sycamore tree in the churchyard, there is now a large stack of logs. These are for anyone in the local community to use. If you would like to take some, please make a donation to St. Wilfrid's using the QR code published (below) each month in this Magazine

You can now donate to the upkeep of our beautiful ancient church by contributing to our online fundraiser.

Scan the QR code to get started!

Your kind donations keep the building running and the church an active place of worship.

We deeply appreciate all the funds we receive. Thank you!



ST. WILFRID'S CHURCH

A few weeks ago, the Parochial Church Council (PCC) of Tunstall, Melling & Leck met to review the recent public consultation about the future sustainability of St. Wilfrid's Church. The purpose of the consultation was to gauge public opinion, clearly explain the current position that the church finds itself in, and to give parishioners the opportunity to express their views and opinions. It was hoped that, by raising awareness of the situation, more people would be encouraged to attend church services, become more actively involved in the running of the church, and come forward with practical ideas to provide a solution to the problems being faced.

This situation is nothing new, following on from a public meeting in 2017 where concerns were raised about the church struggling to cover basic running costs, including the Parish Share, and previous occasions such as specific Gift Days, etc. Since this date, the congregation has dwindled significantly, with costs continuing to rise, both in terms of general running costs and building repairs.

The PCC discussed the outcomes of the consultation and specific views expressed by individuals. Members of the PCC expressed profound sadness at the current situation of a church where Christian worship has taken place over many centuries and which has been such a central spiritual presence in the village for so many years. However, with no realistic plan of a way forward, the meeting resolved to refer the situation to the Diocese of Blackburn.

If the church were to close, this process would take many months. In the meantime, if a solution could be found to enable the church to be viable, it could remain open and fulfil its function as a place of Christian worship. This would need a determined effort by the local community, with a plan of action, people being prepared to take responsibility and a clear commitment to the outcome.

With all of this in mind, services will continue to be held at **St. Wilfrid's**, at **9:30am on the first Sunday of each month (Morning Worship)** and at **11:15am on the third Sunday (Holy Communion)**. There are services in the other churches in the Parish, at Tunstall and Leck, on the alternate weeks. During Advent and Christmas, there are a number of special services held throughout the Parish, including a Walking Nativity, Crib Service, Christmas Eve Holy Communion and a family service on Christmas Day. Please see The Bell or East Lonsdale Benefice website for more details of these services.

The Parochial Church Council of Tunstall, Melling & Leck.

If you wish to donate to St. Wilfrid's the easiest way to do this is through our **Just Giving** page, using the **QR code**. This money goes towards the life and general running costs of the church. If you wish to support **St. Wilfrid's Building Trust**, where the money is specifically used on the upkeep of the building, please contact the treasurer (email: br1016858@gmail.com). Thank you.

Craft Day

Last Wednesday of the month

10am - 4pm

Melling Village Hall



PLENTY OF ROOM-LARGE
TABLES!

BRING YOUR OWN MATERIALS
& EQUIPMENT



GOOD COMPANY

WARM!



**£12 TO INCLUDE
A SOUP AND SANDWICH LUNCH.
BOTTOMLESS TEA AND COFFEE**

BOOK YOUR PLACE BY THE **MONDAY BEFORE**
call Sandra 07713883632 or Mary 07970705496



MELLING VILLAGE HALL EVENTS

Are you interested in joining the committee?

Why not contact:

Mary: 07970705496

Sandra: 07713883632

for more info.



MELLING VILLAGE HALL PUB NIGHTS

Friday 5th Dec, from 7.30pm.

No pub night in January

Friday 6th Feb, from 7.30pm

Why not come along, meet up with friends and have a great start to the weekend.

Melling Craft Day

Wednesday
28th January

See poster for further details
please book by

Monday 26th January

Please note there will
not be a Craft Day in
December.



MOVIE NIGHT Making use of our audio-visual equipment:



DOWNTON ABBEY
16th Jan 2026

Doors open at 7pm and
the film starts at 7.30pm.

In 1930 London, the Crawleys, except Mary, attend a play starring Guy Dexter and Noël Coward, who is also the playwright. Backstage they meet with Dexter, Coward, and former Downton Abbey butler Thomas Barrow, now Dexter's assistant and partner-lover. The next day, the Crawley family is at Lady Petersfield's ball when news breaks about Mary and Henry Talbot's divorce. Mary is asked to leave because royals are expected to attend...

LOOKING AHEAD.....IN MELLING VILLAGE HALL

	Pub Night	5th December 2025	Friday 7.30pm
	Film and afternoon tea	11th December 2025	Thursday 2pm
	Film Night	16th January 2026 - Downton Abbey	Friday 7.30pm
	Craft Day	28th January 2026	Wednesday 10am-4pm
	Pub Night	6th February 2026	Friday 7.30pm

11TH DECEMBER: Sold out!

GET IN THE CHRISTMAS SPIRIT WITH A FILM AND AFTERNOON TEA

£15Following on from our successful afternoon in September why not come along to our warm Village Hall and enjoy afternoon tea and a glass of Prosecco or Mulled Wine whilst watching a Christmas Classic on **Thursday December 11th.**

Must be booked in advance by phoning Mary on 07970705496.



ROYAL BRITISH LEGION POPPY APPEAL 2025

Jim Harrison and Jenny Herd would like to thank the residents of Melling and Wennington

FOR THEIR DONATIONS WHICH TOTALLED

£490.58



HIRE CHARGES FOR MELLING VILLAGE HALL

General public/businesses—£22 per hour,
reduced to £20 per hour for multiple bookings of 3 or more sessions.

Local residents—£20 per hour,
reduced to £18 per hour for
multiple bookings of 3 or more
sessions.

*Get in/set up charge is by
arrangement.*

*Full days/consecutive days by
arrangement.*



EASYFUNDRAISING FOR THE VILLAGE HALL

Remember Melling Village Institute are now registered with
easyfundraising, which means you can raise FREE donations for us
every time you shop online.

Over 7,000 brands will donate to us when you use **easyfundraising** to shop with them -
at no extra cost to yourself!

These donations really mount up and make a BIG difference to us, so we'd really
appreciate it if you could take a moment to sign up and support us. It's completely
FREE and only takes a moment.

Scan the QR code or you can find our **easyfundraising** page at: [www.
easyfundraising.org.uk/causes/melling-village-institute/?utm_
medium=email&utm_campaign=pmc&utm_content=gs-email1](http://www.easyfundraising.org.uk/causes/melling-village-institute/?utm_medium=email&utm_campaign=pmc&utm_content=gs-email1).
They also have an app. Thank you.





Drop off point

4087

Adults in Lancaster & Morecambe and the surrounding areas who were fed between 01.01.24 and 31.12.24

2789

Children in Lancaster & Morecambe and the surrounding areas who were fed between 01.01.24 and 31.12.24

4815

Seven-day emergency food supplies given to people in Lancaster & Morecambe and the surrounding areas between 01.01.24 and 31.12.24

Sandra 07713883632—8 Gillison Close, LA6 2RD

up to 7th December

We will accept long dated food, toiletries (including nappies/other baby items) and Christmas treats.



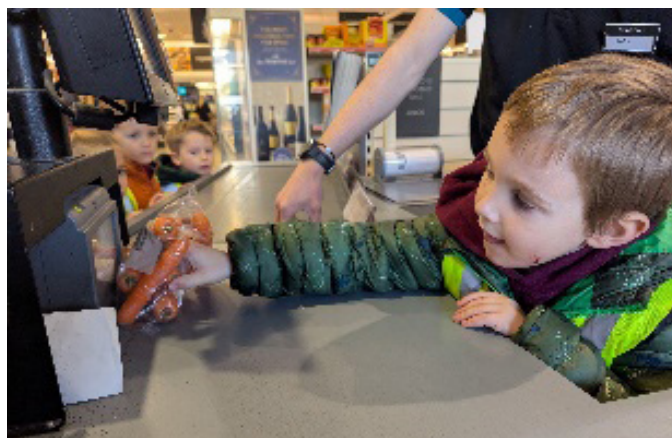


MELLING ST WILFRID CE PRIMARY SCHOOL

‘FOR THE LOVE OF LEARNING, FRIENDSHIP AND FAITH.’

Pupils at **Melling St Wilfrid Primary School** have been out and about this half term, enjoying a range of educational and fun experiences.

The **infant pupils** took a trip by bus to **Kirkby Lonsdale**, where they visited **Booths** supermarket to buy fresh ingredients for their own autumn soup. After their shopping, they treated themselves to delicious ice creams from **The Milking Parlour** before heading back to school. Staff praised the children for being very well behaved and said everyone had a fantastic time.



Meanwhile, the **junior pupils** enjoyed an exciting day in **Liverpool**. Travelling by train from Lancaster, they visited the **World Museum**, where they took part in a fascinating workshop exploring Ancient Egypt and the Romans. The trip offered pupils the chance to bring their classroom learning to life and experience history first-hand.



Melling St Wilfrid's is also inviting local families to come and see what makes their school special. There will be another **open day**—on **Wednesday 14th January**. Prospective parents can book a tour by contacting the headteacher, Mrs Fiona Ip, via email at head@melling.lancs.sch.uk.

The school is also pleased to announce that it now offers **wraparound care** before and after school, providing additional support for busy families.

It's been a busy and exciting half term for Melling St Wilfrid's pupils—one filled with learning, laughter, and lots of new experiences.

Mrs Fiona Ip, Headteacher

Have you been affected by Prostate Cancer?

The Bay Prostate Cancer SUPPORT GROUP

Have you been diagnosed or affected by Prostate Cancer?
You are not alone.

WHERE:
KENDAL: 1st Friday of each month
LANCASTER: 2nd Tuesday of each month
BENTHAM 2nd Thursday of each month

See our website for details:
<https://tbpcsg.org>

CONTACT US:
Email us: tbpcsg@pm.me
Call us: 07867276512
Cancer Care: 01524 381820

tackle
prostate cancer

MACMILLAN
CANCER SUPPORT

Come along to a meeting and have a chat and a cuppa!



LUNE VALLEY ACCOUNTING

35 years' experience.

Based in the Lune Valley
Bookkeeping and Accounts
production for Sole Traders,
Partnerships & Limited
companies.

Personal and corporate tax
returns Wages/PAYE/CIS

Company formation,
and VAT registration

Contact:

Peter Scott on 07341388109
or peter@lvaccounting.co.uk

Ade to B,
Private Hire Taxi

Friendly and professional for all occasions

Airport - Shopping - Train station - Evening out - Day out

☎ 07901 752 892 📷 ade_to_b

Ade Francis

Excellent rates
adrianfrancis103@gmail.com

Based in the Lune valley,
meeting your needs

COOKING CORNER ... LAST MINUTE CHRISTMAS CAKE

FOR THE PRE-SOAKING:

- 150ml brandy/rum
- 1 jar (approx 400g) luxury mincemeat
- 110g ready-to-eat prunes, roughly chopped
- 50g glace cherries, quartered
- 175g dried mixed fruits
- 50g chopped mixed peel

FOR THE CAKE:

- 225g self-raising flour, sifted
- 1½ level teaspoons mixed spice
- 3 level teaspoons baking powder
- 150g softened butter
- 150g dark muscovado sugar
- grated zest 1 small orange
- grated zest 1 small lemon
- 50g Brazil nuts, roughly chopped
- 50g mixed chopped nuts
- 3 large eggs



FOR THE TOPPING:

- A selection of nuts—your choice
- 1 heaped tablespoon sieved apricot jam
- 1 tablespoon brandy

METHOD

1) Place all the pre-soaking ingredients into a bowl, stir really well, then cover with a cloth and leave in a cool place for a few hours or overnight.

2) Place the soaked ingredients plus all the rest of the cake ingredients in a bowl, using an electric hand whisk (or a wooden spoon), beat everything together. Then pour it into the prepared tin, level the top and arrange the whole nuts in rows across the surface.

3) Finally, cover the top of the cake with a double square of baking parchment with an approx 2cm hole piece cut in the centre. Then place the cake on the centre shelf of the oven and bake it for about 2 hours or until the centre springs back when lightly touched. Cool in the tin for 30 minutes before turning it out to finish cooling on a wire rack, removing the lining papers.

4) Heat the apricot jam and brandy together and brush the nuts with the mixture to give them a lovely glaze. Store the cake in an airtight tin or in double greaseproof paper and foil and it will keep beautifully moist for 3 to 4 weeks.



**1 Station Road
HORNBY**

T: 015242 22288

Care & Commitment for your Peace of Mind

E: info@hornbydaynursery.co.uk

Ofsted rated us Outstanding in all areas

- Qualified staff who positively enjoy working with children
- Flexible opening hours to cater for most needs
- 30 hours free childcare for Pre-School children
- Dedicated Baby & Toddler facilities
- Home cooked meals with special diets catered for
- Secure outdoor play areas in rural environment
- Safe off street parking
- Holiday club available during all school holidays
- Childcare vouchers accepted

Looking for childcare? Call Danielle Brown to discuss your individual requirements or to arrange a visit.



Busy Bodies Pre-School
c/o Melling St Wilfrid Church
of England Primary School,
Lodge Lane, Melling,
LA6 2RE
015242 21538 Ext 2

Available for
2, 3 & 4 year olds

Session Times ·

Full days Monday, Tuesday and Wednesday.



Lowfold

landscapes LTD

All aspects of landscaping and garden maintenance

- Stone & porcelain paving
- Decking, driveways & fences
- Turf & lawn care and treatments
- Planting schemes
- Hedge cutting
- Pressure washing

Phillip Howson - 07816 813 848
lowfoldlandscapes@hotmail.co.uk





PARISH COUNCIL NEWS

PARISH COUNCIL MEETING

Tuesday 9th December at 6pm in the Village Hall. Parish forum at 6pm followed by the parish council meeting at 6.30pm

Following the recent heavy rain, the flooded culvert near Vicar Lane was reported by 2 people to County Highways, both Parish Councillors, please can we urge you to report incidents on the ***Love Clean Streets App***, the more reports the more likely it is that they will respond.

Similarly, two councillors recently attended a Road Safety/Traffic meeting along with other village's Parish Councillors and Police, Highways and our County and city Councillors. The public are urged to report speeding and other road incidents on the police web site: Google "***Report a traffic incident to Lancashire Police***"

A very big thank you to the Villagers who distribute the Chronicle to each house. A very special mention to **Lester Griffiths** and **Mike and Barbara Murray** who have kindly delivered the Chronicle for many years but have this year decided it was time for a rest. Mike also stood for hours at the photocopier printing the Chronicle.

LAST POSTING DATES

2nd Class - 17th Dec

Royal Mail tracked 48 - 19th Dec

1st Class - 20th Dec

Royal Mail tracked 24 - 22nd Dec

Royal Mail Special delivery - 23rd Dec

REFUSE COLLECTIONS

3rd Dec— recycling plus the last green bin collection until February 25th

10th Dec—grey bin

17th Dec—recycling

23rd Dec—grey bin

31st Dec—recycling



FROM YOUR CITY COUNCILLOR

Dear Melling

My apologies for not writing here more often - I keep missing the deadline!

Most City Council & Upper Lune Valley news is in my (fairly) regular 'Focus' letters - hand delivered personally (can you help?), most recently last month. If you missed it, let me know, or look it up on FB '*Lib Dems for the Lune Valley*'. Two very pressing issues: the new Lancashire County Council, contrary to all their election hype, is



now seeking to close care homes across Lancashire. Vale View in Lancaster is at huge risk, and there is no alternative provision. Help! Please support saving Vale View: write to democracy@lancaster.gov.uk or www.lancashire.gov.uk/haveyoursay.

Both our MPs, Lizzi Collinge and Cat Smith are working on petitions - join them.

I try to get to as many local village council meetings as possible. Many agendas have common themes: dog poo (STOP IT!), planning disputes (I help where I can), and of course flooding and roads. Whittington recently hosted a valley-wide open meeting, which clarified and aired our grievances. Sadly, promises from County to do better were negated soon after - they are halving the road repair budget. We fight on, helped by a positive commitment from Lizzi Collinge. We keep trying to solve the chronic flooding in several villages.

"Localism" is a key belief. Please do all you can to support our buses, nearby schools, shops (Hornby, Cowan Bridge ...), pubs, churches and village events. Save petrol and cost!

Very best wishes for Christmas and 2026

Yours, Ross (rdhunter@lancaster.gov.uk)

OBITUARY - GERDA SOUTHWELL

When she was six years old, Gerda's parents fled Nazi Germany for Manchester. Despite this huge upheaval, in her first five years in the UK, Gerda learned English, passed her 11 plus and won a scholarship to Whalley Range High School where she added French, Italian and Latin to her German and English. After studying Modern Languages at Liverpool University and gaining her teaching diploma she married and moved to Yorkshire. Unusually for a woman of her generation, despite now being married, she went straight to work at Skipton Girls High School. Gerda was always determined and independent.

She took time out to raise her daughters, and being Gerda, she used this time to create an innovative local playschool. Later she took up her position as Head of Modern Languages at Bentham Grammar School, over the next 20 years, until she retired, this role remained an anchor and a haven as she inspired staff and pupils alike.

In this time Gerda had moved to Wrayton and had remarried this phase of her life was her happiest.



Over her last quarter of a century Gerda revelled in being grandmother and Wrayton could be the best holiday destination.

Gerda served as a Parish Councillor and Village Hall committee member; she was a member of book group too. Gerda moved to Brant Howe in Kirkby Lonsdale a few years ago when being on her own became too much. She sadly passed away in October many friends and neighbours attended her funeral at Beetham Hall crematorium.

HORNBY PENSIONERS - DEC/JAN 2025/26



DOMINOES AND WHIST EVENINGS

These evenings will begin at 7pm in Hornby Institute.

For information regarding these events, please contact:

Eileen Barton on 07780461517

- 6th December: Dominoes.
- 20th December: Dominoes and Whist.
- 3rd January: Dominoes.
- 17th January: Dominoes and Whist.
- 31st January: Dominoes.

CHRISTMAS PARTY

This will be held on

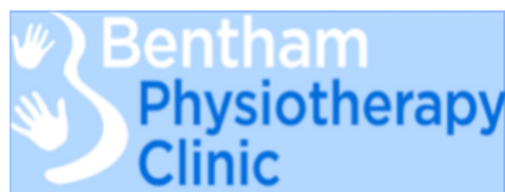
Tuesday December 9th at 12.30pm

This occasion is available to members only. Names of those wishing to take part can be given to Kath Helme, on Wednesday and Thursday mornings from 10am to 12pm

COFFEE MORNING

This will be held on **Saturday January 10th** from **10am until noon**. Donations for the Raffle and Produce stalls will be most welcome.

The **A.G.M** will be held on **Tuesday 10th February**. At **2.30pm**. This is an advanced notice, as members may need to prepare their delicious offerings for the **Jacob's Join**, which follows the meeting.



***For Professional, Effective,
Chartered Physiotherapy,
including sports injuries,
backs, necks and
acupuncture.***

AXA, AVIVA,
BUPA authorised clinic.

Phone 015242 62216

Website: www.benthamphysio.com

Email: info@benthamphysio.com



dp JOINERY

- Fitted wardrobes, furniture and shelves
- Window and door fitting, and repair
- Glazing and reglazing
- Kitchen installation
- Wooden flooring
- General Joinery and Handyman service
- Painting and decorating

No job too small, Don't hesitate to contact me to discuss your requirements

David Pickering, DP Joinery

T: 07527860948

E: dpjoineryuk@gmail.com



MELLING WITH WRAYTON
COMMUNITY GROUP

MELLING WITH WRAYTON



Keep in touch with the latest goings on by joining the new Melling with Wrayton Community Group on Facebook.
All welcome!

Irene Taylor Hearing Centres

Specialists in Hearing Aids
and
Hearing Protection

Ear wax removal via
micro-suction

Salt Pie Lane,
Kirkby Lonsdale
LA6 2BH

015242 73589

www.prestonhearingcentre.co.uk

Est. 1980

B&W Funerals

(Brown & Whittaker)

James G Macdonald & Tara Wilson
Private Chapel of Rest



Ingleton, Burton, Bentham, Austwick,
Clapham, Settle, Wray, Hornby, Caton,
Kirkby Lonsdale & all the surrounding areas

We offer our own Funeral Plans on request

6 Chapel Lane, Ingleton, Carnforth LA6 3FX
jmfunerals@gmail.com

Tel: 015242 41293 or 61370

Mob: 07758 002260 or 07912 568672 (Tara)

24 Hour Service - call 015242 41293

Find us on Facebook

A VERY MERRY CHRISTMAS AND A HAPPY NEW YEAR





Hornby Drama Group

Hornby Drama Group is about to choose a new play to be staged in the next few months, and we would welcome some new actors - no experience is necessary. We also would welcome someone interested in Directing and/or maybe leading our enthusiastic younger members.

Why not come and give it a try, a warm welcome awaits – or give us a call to discuss:

Neil Read on 015242 21339 / 07590 563551 or realneed@hotmail.com



Your dog can't clean up after itself,
it's up to you!



Fixed Penalty Scheme in operation. Maximum fine £1,000

Take Pride in your area:

Report dog fouling and offenders at www.lancaster.gov.uk/dogpoo
or 01524 582935



ANDREW WHITAKER

*Gardener
Painter/Decorator*

*Tel. (01524) 69806
Mob. 07900 905 026*

awhitaker112@googlemail.com

The **Catholic churches** of:

Our Lady Immaculate (Caton) & **St Mary's** (Hornby),
are now being looked after by the clergy at the Cathedral Parish in Lancaster.

The serving clergy are:

Rev Fr John Millar (Cathedral Dean) & Rev Fr Philip Wrigley.

If you need to contact the clergy, please email us at:

clergy@lancastercathedral.org.uk Website: www.lancastercathedral.org.uk

Parish Weekend Mass times for this area:

Saturday Vigil:

18:00 - St Mary's, Hornby

18:30 - Cathedral, Lancaster

Sunday:

09:00 - St Thomas More, Lancaster

10:30 - Cathedral, Lancaster

18:30 - Cathedral, Lancaster



Sam Watson
Meadowlands, Main Street,
Arkholme,
Carnforth
015242 37728
07789 901329
www.wood4thetrees.com
wood4thetrees@outlook.com
Tree Care and Forestry,
Pruning, Thinning and Reductions
Hedging Work

JOULES
— EST. 1989 —
Joules Kirkby Lonsdale
015242 71390
Market Square, Kirkby Lonsdale, LA6 2AN

HORNBY DISTRICT RAMBLERS 2026 PROGRAMME

Meet at Hornby Car Park to leave at 9.30am prompt - Or at parking area for start of the walk

DATES	DISTANCE	LEADER(S)
DECEMBER 13th	4-6 miles	IAN - (07572 914693)
JANUARY 10th	4-6 miles	JENNY H - (015242-21690)
FEBRUARY 14th	4-6 miles	PETER EDGE - (015242 22176)
MARCH 14th	4-6 miles	PETE ARMITAGE - (plarmitage@hotmail.co.uk)
MARCH 28th	6-8 miles	RICHARD - (015242 21579)
APRIL 11th	4-6 miles	ROS - (015242 41888)
APRIL 25th	6-8 miles	PETER COULTHWAITE - (petercoulthwaite1@gmail.com)
MAY 9th	4-6 miles	JOAN - (015242 42520)
MAY 23rd	6-8 miles	STEVE ROBSON - (015242 21560)
JUNE 13th	4-6 miles	PETE ARMITAGE - (plarmitage@hotmail.co.uk)
JUNE 27th	6-8 miles	IAN - (07572 914693)
JULY 11th	4-6 miles	JANET - (janetmkenyon@gmail.com)
JULY 25th	6-8 miles	CHRIS - (0711 384888)
AUGUST 8th	4-6 miles	APRIL AND JOHN - (07929 004215)
SEPTEMBER 12th	4-6 miles	SUSAN RIGBY - (srigby@btinternet.com)
SEPTEMBER 26th	6-8 miles	JENNY H -(015242 21690)
OCTOBER 10th	4-6 miles	HAZEL - (hazel.ellerbysayer169@btinternet.com)
OCTOBER 24th	6-8 miles	PETER EDGE - (015242 22176)
NOVEMBER 14th	WALK, AGM and lunch	COMMITTEE
DECEMBER -12th	4-6 miles	JENNY H (015242 21690)

CONSTITUTION OF THE CLUB

1. The club is Hornby District Ramblers
2. The club exists to provide guided rambles for the enjoyment of the members
3. A committee of a chairperson, secretary, and treasurer and four members will be elected at the AGM
4. The AGM will be held in November
5. The annual subscription will be fixed at the AGM
6. Third party insurance is provided
7. Members walk at their own risk
8. Visitors on rambles are welcome
9. All children must be accompanied by a responsible adult
10. NO dogs are allowed on rambles
11. This constitution can only be amended at the AGM

A contribution for 2026 towards fuel costs, if sharing £3 per person for the shorter distance or £4 for a longer distance. ANNUAL SUBSCRIPTION £5-00.

Phone Jenny Herd for details of walks: **015242 21690** or contact the walk leader

LUNESDALE PROBUS CLUB

Two excellent talks to report on, both proving popular with our members.

Anne-Marie Michele's talk on the impact and role of artists in the Second World War was every bit as fascinating as her previous address on art and WW1. Perhaps as a result of their experience with artists in that war, the government took a different line the second time around. Kenneth Clark (of Civilisation fame) was appointed to commission whomsoever he chose to commemorate the struggle. The result was a wonderfully varied collection of paintings by a whole string of artists, with a considerable focus on the civilian experience of war. The works of Stanley Spencer and Laura Knight come immediately to mind as superb evocations of the impact of the People's War.

On a very different subject, Linda Currin gave us a moving talk on the work of the Olive Branch, charity, in Lancaster, which provides help and support to people in need in the city. A large part of their work is the provision of food, both for home consumption but also in the form of hot meals at their support centre in White Cross. Signposting to other services, compassionate listening and prayer are, however equally important. Linda's talk was very well received and generated a very interesting discussion.

Upcoming, we have a talk on the nuclear industry in the Northwest, our annual Christmas lunch, this year at The Highwayman and a glimpse at the world of bell ringing.

We welcome friends, family, guests and visitors to our meetings which are held at the Institute in Hornby on the first and third Monday mornings of the month, coffee, tea and a biscuit from 10am, meeting called to order at 10.30am.

It is our pleasure to send good wishes to all for the festive season and the New Year.

John Poole (Secretary). Mob: 07713827032





Feet First

Mobile Foot Health Clinic

Treatments in the comfort of your own home

For the professional treatment of ...

- Corns
- Callus
- Cracked Heels
- Fungal & thickened Nails
- Verrucas
- Athletes Foot
- Nail Cutting
- Diabetic Foot Care

For more information or to book an appointment please contact Karen ...

t: 07508 477207
e: feetfirst@live.co.uk

Karen Salisbury S.A.C. Dip F.H.D.P. SAC Dip F.H.P.A.



Lune View Garage Ltd.



**Vehicle Servicing,
Diagnostics,
MOT Testing
Exhausts, Clutches,
Timing Belts, Welding
Tyres,
Wheel Balancing &
Tracking
Air Conditioning Servicing
and Re-Charge
Full Valeting Service Available**

**Melling, Carnforth, LA6 2RB
Tel. 015242 21457
email: dsglover89@btconnect.com**



HAYTER

Graham Fawcett Plant Limited 015242 62888
Unit 3 Bentham Industrial Estate, Bentham LA2 7NB

HAYTER and TORO mower range now in stock.

GARDEN MACHINERY SERVICE & SALES

Tractor Mowers • Self Propelled & Push Mowers

Chains, Bars and Accessories • Oil •
Chain and Blade Sharpening

Chainsaws • Hedge Trimmers • Strimmers • Blowers

*** ALSO, SERVICE OF ALL TYPES OF TRAILERS ***



STIHL PRODUCTS IN STOCK.

RANGE OF MOWERS IN STOCK.

PART EX WELCOME.

CORNVALE

BUTCHERS & FINE FOODS

Eat better this year!!

Are you looking to kick start the year off by eating healthy?!
With our wide selection of products you can make a variety
of healthy meals.



We offer free local delivery, click & collect and a courier service for
you friends and family from afar!!



We are thrilled to announce that our
Cumberland Sausages and 3 Bone
Lune Valley Lamb Rack have both
been honoured with the prestigious
Great Taste Awards!



CornvaleFoodsHome



Cornvale Fine Foods

SHOP ONLINE @ CORNVALEFOODS.CO.UK

015242 22420