

February 2024

THE MELLING CHRONICLE

Movie Night - Empire of the Light

The Village has a Defibrillator

Cooking Corner...Pork and Cider Casserole

The Melling Chronicle

In This Month's Issue

News From Melling And Wrayton.....	4
Parish Council News.....	4
Melling St Wilfrid's CE Primary School.....	4
Melling Village Hall Events.....	6
St Wilfrid's Educational Trust.....	8
St Wilfrid's Church.....	9
Cooking Corner ... Pork and Cider Casserole.....	12
News From The Neighbours.....	18
Rotary Club of Lunesdale.....	16
Hornby District Ramblers.....	18
Lunesdale Probus Club.....	19
Hornby Pensioners.....	19

Contacts

Parish Council Chairman	Sandra Towers Tel: 21399 Email: sandramtowers@yahoo.co.uk
Parish Clerk	Claire Helme Tel: 07845 186958
Parish Council Website	Anthea Carter Tel: 0770 8882989 Email: mellingwithwraytonwebsite@gmail.com
Melling Village Hall	Margaret Toase Tel: 21002
Melling St Wilfrid's School	Tel: 21538
Church Warden	JAC Beeson Tel: 21638
Melling Chronicle Editor	Anthea Carter Tel: 0770 8882989 Email: mellingchronicle@yahoo.co.uk

EDITORIAL TEAM

Editor: Anthea Carter, assisted by Sandra Towers

Delivery Team: Judith Jones, Mike Murray, Robbie Murray, Sophie Ridsdale (Wennington), Eleanor Procter, Lester Griffiths, Cath Taylor

Advertising and Invoices: Claire Helme (Parish Clerk)

Front Cover: Many thanks to Edwin Howson

1 Feb	Rotary Club of Lunesdale - Meeting	Page 16
2 Feb	Pub Night - Melling Village Hall	7.30pm
3 Feb	Dominoes Evening - Hornby Institute	7pm
4 Feb	Morning Service -St Wilfrid's Church	11.15am
5 Feb	Lunesdale Probus Club - Talk	Page 19
6 Feb	Hornby Pensioners AGM - Hornby Institute	Page 19
10 Feb	Hornby District Ramblers - Walk	Page 18
17 Feb	Dominoes Evening - Hornby Institute	7pm
18 Feb	Holy Communion -St Wilfrid's Church	11.15am
19 Feb	Lunesdale Probus Club - Talk	Page 19
22 Feb	Rotary Club of Lunesdale - Meeting	Page 16
23 Feb	Movie Night - Melling Village Hall	7pm
27 Feb	Parish Council Meeting - Melling Village Hall	6pm

MELLING CHRONICLE

The Chronicle is available in PDF format at www.mellingwithwrayton.net

Please send items for the Melling Chronicle to the editor:

mellingchronicle@yahoo.co.uk

Please supply text as a Word document or by email. Photographs are always welcome at a high resolution. If you have an interesting, relevant, high resolution image for the front or back cover, please send it in for consideration.

The Melling Chronicle is a forum open to everyone in the village. The views expressed in articles and letters are not necessarily the views of the Editor or the Parish Council, and they cannot accept responsibility for goods or services advertised in the magazine, although advertisements are accepted in good faith. The Editor reserves the right to edit or exclude items submitted for publication, and no liabilities are implied or accepted.

Deadline for any contribution is the 20th of the preceding month.

The Melling Chronicle is published monthly except for January and August.

ADVERTISING

Please contact: The Parish Clerk mellingwithwraytonpc@gmail.com

Charges for 10 editions/Full Page £80.00/Half page £50.00/Quarter page £30.00

Single entry: By negotiation

Please note that anyone submitting an article, notice, letter or advertisement for inclusion in the Melling Chronicle is responsible for the content (including factual accuracy) this rests solely with the originating individual or organisation.



PARISH COUNCIL NEWS

THE VILLAGE HAS A DEFIBRILLATOR!

A successful application for a defibrillator was made jointly by the Parish Council and the Village Hall Committee. They have part funded



the defibrillator with London Hearts, the main UK defibrillator charity funding the rest.

The defibrillator will be located at the Village Hall.

More information next month!

THANK YOU

As we start a new year of the Melling Chronicle the Parish Council would like to thank regular contributors, the editing team and the team of villagers who give their time each month to deliver it to each house.

PARISH COUNCIL MEETING

The Parish Council Meetings this year will be held on Tuesday evenings, the next meeting will be on **Tuesday 27th February at 6pm**. It will start with the Village forum at 6pm followed by the meeting itself at 6.30pm. All parishioners are welcome to attend.



MELLING ST WILFRID CE PRIMARY SCHOOL

'FOR THE LOVE OF LEARNING, FRIENDSHIP AND FAITH.'

Happy New Year to Everyone in Melling and the surrounding areas.
We hope 2024 is a great year for you all.

We enjoyed a fantastic end to the term. There is nothing quite like Christmas in a rural primary school and it is a time of year when probably nothing has changed since you were in primary school.

The whole school can come together for Christmas dinner and enjoy the traditional dinner with all the trimmings served by our fantastic cook, Sarah. Crackers and party hats are of course an essential



feature but instead of Christmas pudding and mince pies we have the children's favourite homemade cookies and flapjacks.

All the infants are thoroughly involved in the Nativity and know lots about the Christmas story - even the 4-year olds. Shepherds with tea towels on their heads are still a thing here in Melling!

The older children enjoy leading the Christingle service at Church and in a world where everything changes, it is great that the traditions of Christmas in school stay the same. The Year 6 enjoyed presenting Sarah the cook with chocolates to thank her for all the Christmas lunches they have enjoyed in school over the years.

Just before the end of term we also had a visit from the Church school inspector- the inspection process is similar to OFSTED.

2 inspectors were here for the day but they comment on the ethos and quality of the children's development. The inspector loved Melling and the school and came back at the weekend to show her husband round the area, so thanks to everyone who spent the time to talk to her and make her feel welcome.

The report is available online- here is just one of the good quotes.

'Every member of the Melling school community knows themselves to be loved and cherished. The Christian vision to 'Let your Light Shine' has helped leaders to establish an exceptionally inclusive and nurturing school culture.'

I feel very proud to work with such a great team of staff and school full of children.

Mrs Fiona Ip, Headteacher



Y6 and our school cook, Sarah.





MELLING VILLAGE HALL EVENTS

We still need some extra committee members.

Why not contact: Mary 07970705496 or Sandra 07713883632 for more info.



MELLING VILLAGE HALL PUB NIGHT

Friday 2nd February, bar opens 7.30pm

Friday 1st March, bar opens 7.30pm

Why not come along, meet up with friends and have a great start to the weekend.



MOVIE NIGHT Making use of our audio-visual equipment:

EMPIRE OF THE LIGHT (15) - 23rd February 2024, doors open at 7.00pm and the film starts at 7.30pm. Book with Mary 07970705496.



Hilary (Olivia Colman) is a cinema manager struggling with her mental health, and Stephen (Micheal Ward) is a new employee longing to escape the provincial town where he faces daily adversity. Together they find a sense of belonging and experience the healing power of music, cinema, and community.

ADVANCE NOTICE: DATE TO BE CONFIRMED.

A Pies, Peas and Puds evening to showcase the new kitchen and bar areas with entertainment from:

THE SCRIMSHANKERS

LOOKING AHEAD.....IN MELLING VILLAGE HALL

	Pub Night	2 Feb 2024	Friday 7.30pm
	Film Night	23 Feb 2024 - Empire of the Light	Friday 7.30pm
	Pub Night	1 Mar 2024	Friday 7.30pm
	Film Night	22 Mar 2024 - Death on the Nile	Friday 7.30pm
	Pub Night	5 Apr 2024	Friday 7.30pm
	Film Night	Date tbc - Knives Out	Friday 7.30pm
	Pub Night	3 May 2024	Friday 7.30pm
	Film Night	24 May 2024 - Blonde	Friday 7.30pm
	Pub Night	7 Jun 2024	Friday 7.30pm
	Film Night	28 Jun 2024 - The Great Escaper	Friday 7.30pm
	Pub Night	5 Jul 2024	Friday 7.30pm
	Film Night	26 Jul 2024 - The Whale	Friday 7.30pm
	Film Night	23 Aug 2024 - The Electrical Life of Louis Wain	Friday 7.30pm
	Pub Night	6 Sep 2024	Friday 7.30pm
	Film Night	27 Sep 2024 - Fisherman's Friends 2: One and All	Friday 7.30pm
	Pub Night	4 Oct 2024	Friday 7.30pm
	Film Night	25 Oct 2024 - The Grey Man	Friday 7.30pm
	Pub Night	1 Nov 2024	Friday 7.30pm
	Film Night	15 Nov 2024 - The Glass Onion	Friday 7.30pm
	Pub Night	6 Dec 2024	Friday 7.30pm

ST WILFRID'S EDUCATIONAL TRUST

WHO ARE WE AND WHAT IS OUR PURPOSE?

St Wilfrid's Educational Trust is a charity that was set up in the early 1990s after St Wilfrid's Church in Melling gifted the Trust a property. The property was rented for many years and the rent was used to allocate educational grants to the residents of Melling, Wrayton and Wennington. The property was sold a few years ago and the proceeds were invested with a local investment management company.

The Trustees and Committee members are local volunteers who are associated with the school, church and local community in many ways. The Trust meet twice a year and their purpose is to award Educational Grants that support individuals or group projects. One of the main beneficiaries over the years has been Melling Primary School, who have been awarded many grants towards after school clubs, school trips and equipment which benefit all pupils.

Applications are welcomed from residents who may need financial assistance towards educational related pursuits. The following lists provide examples of what can and cannot be funded.

Examples of what the Trust can fund;

1. Educational or School Visit for both Primary and Secondary School Students
2. Educational Material for University/ Further Education (such as topic related books)
3. Adult educational training/ retraining (such as formal online learning or adult college)
4. Special Educational Needs Software Licences (such as Clicker 8 and Docsplus Literacy Software)
5. Special One Off Extra-Curricular Events (such as Sporting Championships or Camps)

Examples of what the Trust Cannot Fund;

1. Musical Instruments
2. Uniform
3. Sporting or Educational Equipment
4. Regular extra-curricular lessons (such as weekly/monthly dance classes or tennis lessons)

The trust has a certain amount of funds to allocate at each meeting and their aim is to award the full amount.

The next meeting will be held on **March 11th 2024** so any applications must be received before then. All applications are treated as confidential and you will receive a written reply soon after your application has been heard at the meeting. Please

note that as a charity the Trust require supporting evidence that the monies awarded have been used as per the application. The Trust will require either photos or payment receipts as appropriate. Failure to supply evidence to the trust may jeopardise any future applications.

Please apply in writing to the trustees of St Wilfrid's Educational Trust:

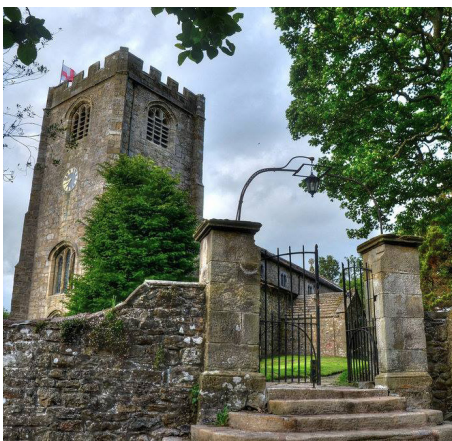
C/O The Secretary, Mrs R Fawcett, 7 Gillison Close, Melling, Carnforth. Lancs. LA6 2RD or email; stwilfridseducationaltrust@gmail.com with the subject 'Grant Application'

ST. WILFRID'S CHURCH

Thank you to all of those people who supported the concert held in church prior to Christmas. We were delighted to see so many people in church and it was a wonderful occasion. Special thanks go to members of the Parish Choir, who organised the event.

The purpose of the occasion was to welcome members of the community into church and to highlight our profile within the village and local community. We value the support of the community and hope that more people will be inspired to join in our worship. Regular church service are 9:30am on the first Sunday of each month for Morning Service and 11:15am on the third Sunday of each month for Holy Communion. In addition, there are more informal services at 4pm for families. These are held around the Benefice each month. For more information, please look in The Bell newsletter, on the East Lonsdale Benefice website or on our Facebook page.

If you would like to donate to the life and running of the church, please use the QR code published below.



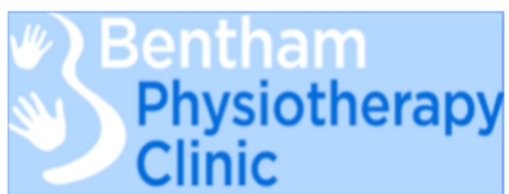
You can now donate to the upkeep of our beautiful ancient church by contributing to our new online fundraiser. Scan the QR code to get started!

Your kind donations keep the building running and the church an active place of worship.

We deeply appreciate all the funds we receive. Thank you!



DONATE NOW WITH
JustGiving



*For Professional, Effective,
Chartered Physiotherapy,
including sports injuries,
backs, necks and
acupuncture.*

AXA, AVIVA,
BUPA authorised clinic.

Phone 015242 62216

Website: www.benthamphysio.com

Email: info@benthamphysio.com

ANDREW WHITAKER

*Gardener
Painter/Decorator*

*Tel. (01524) 69806
Mob. 07900 905 026*

a Whitaker112@googlemail.com

Irene Taylor Hearing Centres

Specialists in Hearing Aids
and
Hearing Protection
Ear wax removal via
micro-suction

Salt Pie Lane,
Kirkby Lonsdale
LA6 2BH

015242 73589

www.prestonhearingcentre.co.uk

Est. 1980

LUNE VALLEY ACCOUNTING

35 years' experience.

Based in the Lune Valley
Bookkeeping and Accounts
production for Sole Traders,
Partnerships & Limited
companies.

Personal and corporate tax
returns Wages/PAYE/CIS

Company formation,
and VAT registration

Contact:

**Peter Scott on 07341388109
or peter@lvaccounting.co.uk**



**1 Station Road
HORNBY**

T: 015242 22288

Care & Commitment for your Peace of Mind

E: info@hornbydaynursery.co.uk

Ofsted rated us Outstanding in all areas

- Qualified staff who positively enjoy working with children
- Flexible opening hours to cater for most needs
- 30 hours free childcare for Pre-School children
- Dedicated Baby & Toddler facilities
- Home cooked meals with special diets catered for
- Secure outdoor play areas in rural environment
- Safe off street parking
- Holiday club available during all school holidays
- Childcare vouchers accepted

Looking for childcare? Call Danielle Brown to discuss your individual requirements or to arrange a visit.



Busy Bodies Pre-School
c/o Melling St Wilfrid Church of
England Primary School,
Lodge Lane, Melling,
LA6 2RE
015242 21538 Ext 2

*All 3 to 4 year olds can access
15 hours per week of free early
years entitlement.*

*Some 2 year olds are also
eligible if criteria met.*

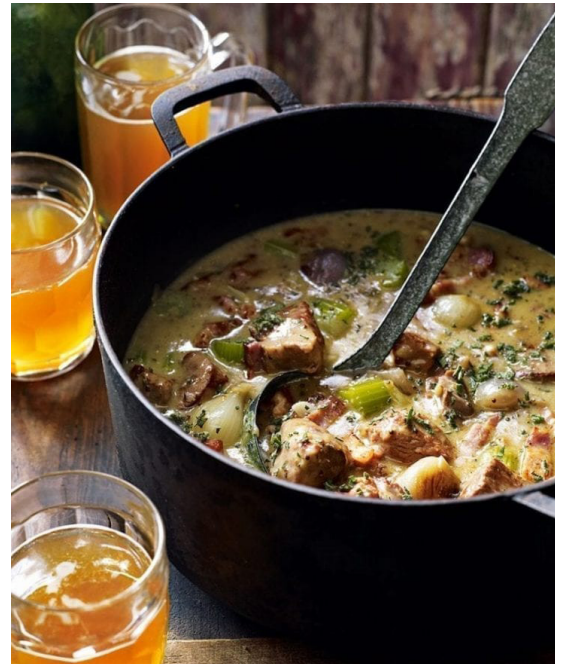
Session Times - Monday, Tuesday and Thursday

- *Morning session: 9am - 12.30pm, £14 (includes lunch period)*
- *Afternoon session: 12.30pm - 3pm, £10*
- *Full day: £24 (A school lunch can be provided upon request for £1.10)*

COOKING CORNER ... PORK AND CIDER CASSEROLE

INGREDIENTS

- 3 tbsp sunflower oil
- 200g British free-range smoked bacon lardons
- 1.2kg well-trimmed, free-range pork shoulder, cut into 5cm pieces
- 400g small shallots, peeled
- 55g butter, softened
- 1 medium onion, chopped
- 450ml dry cider, plus an extra splash
- 450ml fresh chicken stock
- 1 tbsp chopped fresh sage
- 3 large celery sticks, cut into chunky slices
- 30g plain flour
- 2 tbsp wholegrain Dijon mustard
- 4 tbsp crème fraîche



METHOD

1) Heat the oven to 170°C/150°C fan/ gas 3½. Put a large, flameproof casserole over a medium-high heat, add 1½ tablespoons of the oil, then the bacon lardons, and fry slowly until crisp and brown. Lift onto a plate using a slotted spoon.

2) Heat the rest of the oil in the casserole and brown the pork in 2 batches, setting it aside with the bacon when ready. Put the shallots in the pan and fry until golden all over. Set aside with the pork and bacon.

3) Put half the butter and the chopped onion in the pan, cover and cook for 10 minutes until soft and lightly browned. Return the pork and bacon to the pan, pour over the cider and stock, stir in the sage and bring to the boil, stirring now and then. Cover with foil and the lid, then transfer to the oven to cook for 1½ hours.

4) Stir the celery and shallots into the casserole, re-cover and return to the oven for a further 30 minutes, by which time the meat and vegetables should be tender.

5) Put the casserole on the hob, uncover it and bring to a simmer. Mix the remaining butter with the flour to make a smooth paste (known as a *beurre manié*). Stir in some paste and let it simmer and thicken, adding a little more if need be, until the casserole liquid has a good sauce consistency. (You might not need to use all the paste.) Stir in the mustard and *crème fraîche*, then simmer for 1-2 minutes more. Add an extra splash of cider just before serving.

Charlotte Mason Pilates

Specialising in; sports specific Pilates,
injury prevention and rehabilitation and
pre and post natal fitness

Train 1 to 1 or in a small group sessions
in the studio or at your home

Get in touch with Lottie to find out more:
charlottemasonpilates@outlook.com
07791704014

Qualifications: Level 3 Pilates, Level 3 Personal Training, Pre and
Post Natal Exercise Programming, GP Exercise Referral – lower
back pain and rehabilitation

Lune Valley Physiotherapy

Grad Dip Phys MCSP HCPC

Wanting to regain ability after illness or surgery?

Stiff and sore after an accident, broken bone or new joint?

Have tightness after surgery, accidents or radiotherapy?

Diagnosed with a life limiting or degenerative condition?

07934 785 797 leahthephysio@gmail.com

www.leahthephysio.co.uk

Specialist experience with scarring after surgery,
accidents and radiotherapy.

Lowfold Landscapes

Garden Maintenance & Design
Planting Schemes, Turfing
Decking, Paving, Patios
Topsoil & Stone
Grass Cutting
Tree Surgery

Call Philip Howson

07816 813 848

Lune View Garage Ltd.



Vehicle Servicing,
Diagnostics,
MOT Testing
Exhausts, Clutches,
Timing Belts, Welding
Tyres,
Wheel Balancing &
Tracking
Air Conditioning Servicing
and Re-Charge
Full Valeting Service Available

*Melling, Carnforth, LA6 2RB
Tel. 015242 21457
email: dsglover89@btconnect.com*



HONDA

Graham Fawcett Plant Limited

Unit 3, Bentham Industrial Estate,
Bentham, Lancaster, LA2 7NB **015242 62888**



GARDEN MACHINERY SERVICING & SALES

We can offer ***FREE*** collection and delivery of garden machinery/ servicing for Melling residents.

Tractor Mowers • Self Propelled & Push Mowers
Chainsaws • Chains, Bars and Accessories • Chain/ Blade Sharpening
Hedge Trimmers • Strimmers • Oil • Blowers



STIHL CHAINSAWS IN STOCK.
PETROL ENGINES.

RANGE OF MOWERS IN STOCK – HONDA/ BRIGGS & STRATTON
PART EX WELCOME. MOWERS TO SUIT ALL BUDGETS

**ST MARY'S PARISH, HORNBY, with
 OUR LADY'S, CATON and ST JOSEPH'S, KIRKBY LONSDALE**
 Parish Priest: Fr Michael Docherty
 Tel: 01524 21246

For times of services, newsletters & general information during the pandemic
 please go to our website:

www.lunevalleycatholics.org.uk



Sam Watson
 Meadowlands, Main Street,
 Arkholme,
 Carnforth
 01524237728
 07789 901329
www.wood4thetrees.com
wood4thetrees@outlook.com
 Tree Care and Forestry,
 Pruning, Thinning and Reductions
 Hedging Work

BRAKEBURN	fransa
	<i>lily & me</i> 
	
ROBELL	SEASALT CORNWALL
Tamaris	thought
	White STUFF

	Market Square Kirkby Lonsdale 015242 71390
--	---

THE ROTARY CLUB OF LUNESDALE



With the Festive Season activities behind us club members now look forward to a productive and enjoyable 2024. On behalf of them all may I offer a big thank you to everyone who donated to our Christmas collections. It was a

privilege and a joy to meet and chat with so many people who willingly put money into our collection tins which amounted to a remarkable total of just over £1,700. In due course this money will be donated to deserving local causes.



ROTARY PEACE FELLOWSHIP

Looking ahead we already have a number of excellent speakers booked. The first is Andy Underwood, a member of the Rotary Club of Ulverston. Andy is the District Membership Representative. It will be interesting to hear what he has to say on the subject of attracting and enrolling new members. On **1st February** Pam Holgate, our District Governor, is our speaker. During her term of office she will visit every Rotary Club in the District. On **22nd February** we have a lady speaker who later in 2024 will attempt to row across the Atlantic. Wow!

My final thought as I finish this piece is to remind you of the toast members drink to at every meeting which is "Rotary Fellowship and Peace The world Over". Rotary is a global organisation and it is comforting to remember that thousands of Rotarians around the world in these troubled times will raise a glass to this.

Stay well, stay safe. Lilian.

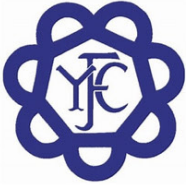


MELLING WITH WRAYTON COMMUNITY GROUP

MELLING WITH WRAYTON



Keep in touch with the latest goings on by joining the new Melling with Wrayton Community Group on Facebook. All welcome!



Vale O' Lune Young Farmers Annual Muck Haul

Saturday 9th March 2024

FCN
THE FARMING
COMMUNITY
NETWORK

Do you need some muck for your garden?

Look no further, Vale O' Lune Young Farmers are holding their annual muck haul. Raising money for club funds and The Farming Community Network.

We deliver from Lancaster to Bentham through the Lune Valley including Melling, Arkholme, Caton and surrounding areas.

Price list

Per bag - £3

½ trailer loose - £30

Full trailer loose - £50

½ trailer bagged - £60 (25 bags at £2.40 a bag)

Full trailer bagged - £90 (50 bags at £1.80 a bag)

Please contact Laoise on 07958735245 with your name, address, and how many bags or trailer loads you would like.



HORNBY DISTRICT RAMBLERS 2024 PROGRAMME

Meet at Hornby Car Park to leave at 9.30am prompt - Or at parking area for start of the walk

DATES	DISTANCE	LEADER(S)
FEBRUARY 10th	4 to 6 miles	Steve: 015242 21560
MARCH 9th	4 to 6 miles	Carole: 01524 735310
MARCH 23rd	6 to 8 miles	Cath and Nicky: cathsexton16@icloud.com
APRIL 13th	4 to 6 miles	Hazel: hazel.ellerbysayer@icloud.com
APRIL 27th	6 to 8 miles	Chris: (wild flower walk) 07711 384888
MAY 11th	4 to 6 miles	Ros: 015242 41888
MAY 25th	6 to 8 miles	Richard: 015242-21579
JUNE 8th	4 to 6 miles	Jenny: (Dent and the Dee) 015242 21690
JUNE 22nd	6 to 8 miles	Chris: 07711 384888
JULY 13th	4 to 6 miles	Ros: 015242 41888
JULY 27th	6 to 8 miles	TO BE DECIDED
AUGUST 10th	4 to 6 miles	Peter Edge: 015242 22176
SEPTEMBER 14th	4 to 6 miles	Jenny: (Grassington) 015242 21690
SEPTEMBER 28th	6 to 8 miles	Peter Edge: 015242 22176
OCTOBER 12th	4 to 6 miles	Joan: 015242 42520
OCTOBER 26th	6 to 8 miles	Cath and Nicky: cathsexton16@icloud.com
NOVEMBER AGM	9th short walk and lunch	COMMITTEE
DECEMBER 7th	4 to 6 miles	TO BE DECIDED

A contribution for 2023 towards fuel costs, if sharing £3 per person for the shorter distance or £4 for a longer distance. ANNUAL SUBSCRIPTION £5-00.

Phone Jenny Herd for details of walks: **015242 21690** or contact the walk leader

CONSTITUTION OF THE CLUB

1. The club is Hornby District Ramblers
2. The club exists to provide guided rambles for the enjoyment of the members
3. A committee of a chairperson, secretary, and treasurer and four members will be elected at the AGM
4. The AGM will be held in November
5. The annual subscription will be fixed at the AGM
6. Third party insurance is provided
7. Members walk at their own risk
8. Visitors on rambles are welcome
9. All children must be accompanied by a responsible adult
10. NO dogs are allowed on rambles
11. This constitution can only be amended at the AGM

2024 COMMITTEE

Chair: Jenny Herd

Secretary: Peter Edge

Treasurer: Chris Kynch -

Richard Kenyon - Ken Sedgwick - Ros Davey

LUNESDALE PROBUS CLUB - HORNBY 2024

Our meetings for 2024 began on **Monday January 15th** when Martin Cooper gave us a fascinating talk on Canals past and present uses.

Our speaker on **February 5th** will be Christine Conder to talk about *B4RN 'the early Days'*. Christine was the driving force that led to the development and installation of the system in our area and many others.

Our speaker on **February 19th** is Lionel Wilson on the *Volcanoes of Mars*, this a follow up to the excellent talk he gave us on, Is There Water on Mars?.

Please remember friends and guests are always welcome at our meetings.

Lunesdale Probus Club meetings are usually held on the first and third Monday of each month. We meet at the Hornby Village Institute at 10.15am for coffee/tea and chat before each session.

For further details or any information on this or other Lunesdale Probus Club matters please contact - Lunesdale Probus Club: 015242 22283

HORNBY PENSIONERS

EVENTS DURING FEBRUARY



Dominoes evenings.

These evenings will begin at 7pm in the Institute. Dates during February are on **Saturdays, 3rd and 17th.**

No previous experience of the game is needed, and everyone is welcome.

A.G.M.

This will be held on **Tuesday 6th February** and will be followed by a Jacob's Join. This is usually a most enjoyable event, as the tasty offerings of our members never cease to tempt our taste buds.

Please NOTE that this is the **first Tuesday in February.** Not our usual second.

Membership cards will be available on this date, at a cost of £10 p.p.

CORNVALE

BUTCHERS & FINE FOODS



YOUR LOCAL BUTCHER DELIVERING STRAIGHT
TO YOUR DOOR

- Lune Valley Lamb
- Locally Sourced Beef
- Saddleback Pork
- English Poultry
- Award Winning Sausages & Burgers
- Meat Packs, BBQ & Bulk Buy Deals.....
- Wild Venison & Game, Local Jams & Chutney
- Free Range Milk, Fresh Fruit & Vegetables



Cornvalefoods.co.uk

Order Online & Pick Either
1. Delivery on Your Chosen Day.
2. Collection from the Unit.

Station Yard,
Melling
LA6 2QY

Prefer to discuss your requirements then give
us a call or pop in for a chat !!

015242 22420